



# Warwickshire County Council Education and Learning Sufficiency Strategy 2015 - 2019



# Contents

## Contents

|  |    |
|--|----|
| Part One: Introduction .....                         | 3  |
| The Education and Learning Vision .....              | 3  |
| Legal Duties .....                                   | 3  |
| Links to Other Strategies.....                       | 4  |
| Key Planning Processes .....                         | 4  |
| Current Context .....                                | 6  |
| Part 2: Policies Practices and Principles .....      | 9  |
| School Characteristics.....                          | 10 |
| Supply and Demand .....                              | 11 |
| Specific Requirements.....                           | 12 |
| School Performance .....                             | 13 |
| Part 3: Current Provision.....                       | 14 |
| Early Year Settings .....                            | 14 |
| Primary Schools .....                                | 14 |
| Secondary Schools.....                               | 15 |
| Special Schools .....                                | 15 |
| Part Four: Planning Data.....                        | 16 |
| Section 1: Early Years Provision .....               | 16 |
| Section 2: Mainstream Schools .....                  | 21 |
| Central Area .....                                   | 24 |
| Eastern Area .....                                   | 28 |
| Northern Area .....                                  | 32 |
| Nuneaton and Bedworth Area.....                      | 36 |
| Southern Area.....                                   | 40 |
| Section 3: Special Educational Needs Provision ..... | 46 |
| Funding required to meet identified needs.....       | 48 |

## Part One: Introduction

### The Education and Learning Vision

This Sufficiency Strategy is designed to help deliver the vision for Education and Learning across Warwickshire that:

#### **Every child and young person in Warwickshire will:**

- attend a good or outstanding school or setting;
- achieve well whatever their starting point or circumstances;  
and
- go on to a positive destination

In that context, the Sufficiency Strategy will help schools, parents, council staff, local partners and stakeholders understand how Warwickshire County Council plans and provides school places to ensure that all children and young people thrive in sustainably good or outstanding schools and settings throughout their education, wherever they live.

It sets out the principles underpinning school place planning; the ways in which places will be delivered, the information which will be used and the way we work with people to deliver high quality, accessible schools and early years places for all learners.

### Legal Duties

Warwickshire County Council has a legal duty to:

- ensure sufficient schools and places in a locality;
- secure sufficient early years & childcare places;
- ensure sufficient post 16 provision;
- provide appropriate education provision for children with special educational needs and disabilities;
- promote high education standards;
- ensure fair access to educational opportunity;
- promote the fulfilment of every child's education potential;
- promote diversity and parental choice.

It is the Council's role to plan, commission and organise school places in a way that raises standards, manages supply and demand and creates a diverse infrastructure. This strategy provides for the longest possible planning horizon to ensure that need is anticipated and met in a transparent, objective, cost effective and sustainable way.

## Links to Other Strategies

The focus of this strategy is the provision of places for age 0-19; this strategy also links with a number of other key Council strategies including Early Years, School Improvement, SEND provision, and Vulnerable Learners

The strategy supports the coordinated approach to Warwickshire County Council's estates and assets, set out in the Council's [property strategy](#). The Council is committed to providing accommodation, whether permanent or temporary, that is high quality, fit for purpose, provides value for money and ensures flexibility to respond to changes in need and curriculum.

## Key Planning Processes

### Pupil Number Forecasts

School-level forecasts of future pupil numbers are produced each year on the receipt of the latest population data from the health authorities and the latest data on parental preferences and housing numbers. The following process is followed:

- **Reception Intakes**

Data is provided at postcode level from health authorities on all Warwickshire resident children aged 0-4; this is then aggregated to match the LA's SCAP (School Capacity) planning areas. This data is provided annually, which allows patterns to be found in families moving in and out of each area with pre-school children. Once these have been taken into account, it is possible to compare recent numbers of pre-school children with the number that then arrived in Warwickshire School Reception classes. A percentage is generated for each planning area (e.g. 95% of the number of children resident in Bedworth will enter a Reception class at a maintained Warwickshire school); these percentages are then applied to the most recent data to give a forecast of the number of pupils living in each planning area likely to start in Reception in a Warwickshire school over the next few years. Once this has been established the Reception class numbers in each planning area are distributed across the County's schools in line with recent patterns, e.g. 5% of pupils living in Warwick go to Westgate Primary school. Numbers are increased to account for the likely movement in of pupils living out of county. Individual rates of increase are applied to individual schools as this is clearly more of a factor for schools near the county boundaries. Those rates are based on recent trends.

- **Year 7 Intakes**

The process is identical to the one explained above for Reception intakes except that the expected number of Year 7 pupils living in each planning area is arrived at by comparing the size of recent Year 7 cohorts with the size of that cohort when they were in Year 6. This generates a percentage for each planning area and these are applied to all younger year

groups to generate Year 7 number for future years for each planning area.

- **In-year**

In most cases the numbers are rolled forwards with adjustments only made where a specific need has been identified or where there are irregular points of transfer such as with the county's remaining infant and junior schools. Adjustments are made to account for pupils finding alternative routes at post-16 by looking at previous rates of transfer from Year 11 to Year 12.

- **Housing**

The County Council maintains a database of housing developments with their likely pupil yields, which are calculated using formulae that are sensitive to the part of the County the development falls in. Pupil yields are added to the forecasts where appropriate – in most cases assumptions are made as to the rate the houses will be built and occupied unless specific information is available. Adjustments are made as new pupil-level data becomes available. Information relating to housing developments is obtained from District and Borough Councils.

## **School Organisation**

Where significant changes need to be made to maintained schools, it is often (but not always) the case that some sort of school organisation process is required. In most cases this involves a level of consultation with key stakeholders and the publication of formal proposals before a decision is taken by the County's Cabinet.. Changes to Academies are not dealt with by the local authority and those schools must seek approval from the Education Funding Agency (EFA) before making changes.

Should the need to establish new schools arise, there is a presumption in law that these schools will be Academies or Free Schools. The role of the local authority is to identify a site for the school and to seek applications to run the new school from potential sponsors: the final decision on who should sponsor the school is taken by the Regional Schools Commissioner so is outside of local authority control.

## **Admissions Levels**

Each year the local authority co-ordinates consultation on admission arrangements for all schools in Warwickshire, this includes the Published Admission Number (PAN). According to the School Admissions Code all PANs should be based on the physical capacity of the school so it is important that the local authority maintains up to date capacity assessments for all schools in Warwickshire and that changes to school buildings are taken into account when setting PANs.

Warwickshire County Council is the admissions authority for all community and voluntary controlled schools in the County and so is responsible for setting the PAN of those schools each year. That responsibility falls to the relevant admissions authority for all other types of

schools; however, should the local authority not be able to reach agreement with one of those other admissions authorities over its proposed admission arrangements, it has the power to refer the dispute to the Office of the Schools Adjudicator for a resolution.

## **Current Context**

### **Population Changes**

Across the County of Warwickshire the overall population grew by 9% from 2001 to 2011, with a further 7% growth expected by 2021. The increase in population varied considerably by district with North Warwickshire growing by just 1% but Rugby by 17%.

Where that population growth has been driven by an increase in births or migration families with school age children, clearly there will be an impact on the level of school places required. The number of births in Warwickshire increased between 2001 and a peak in 2010 by 21%, which has required the County to create additional primary school places. Since 2010, the number of births has first stabilized then begun to fall so that the number of births in 2014 was 7% lower than in 2010 across the County. There are, however, again differences between districts with the biggest drops in birth numbers seen in North Warwickshire and Stratford where there are large rural areas.

The latest data from the health authorities gives us some key headlines:

- The number of children entering Reception classes peaked for entry into September 2015, and will begin to stabilize and in some areas drop after that, although the impact of additional housing will reduce the scale of the drop in some localities.
- The overall numbers of Primary school children will continue to grow until September 2018, as larger year groups work their way through, then overall numbers will begin to stabilise for the year groups entering Reception from September 2016 onwards although, again, in some areas the impact of new housing will offset this.
- Overall numbers in secondary schools will grow from September 2015 onwards as larger cohorts transfer from primary schools, expecting to peak in September 2022 to correspond with the Reception peak seven years earlier, but numbers may then plateau as a significant number of new houses will have been built.

### **Housing**

New housing developments create additional demand for existing and new education facilities. Each District Council produces a Local Plan which sets out development policies and sites over a 15 year period. In total, there are plans to build over 65,000 additional homes across the 5 areas. These are likely to lead to over 25,000 additional children. Growth is not uniform across the County; for example Rugby is one of the fastest growing areas outside London. However, the delay in the adoption of Local Plans is adding to the uncertainty about when and where development will take place. There are also significant

numbers of housing developments receiving planning permission outside the local plan process, which are impacting on local schools. These are included in Part Four below.

## **Funding**

Capital allocations to meet predicted shortfalls in provision are provided by the Education Funding Agency (EFA) to all local authorities based on the data provided in the annual School Capacity return. This return informs the EFA of the expected change in pupil numbers over the next few years, the current capacity of schools to meet those numbers and the planned changes to that capacity. There is pressure on capital budgets for new school places across the county and it is likely that allocations will continue to be limited for the foreseeable future. It is important, therefore, to consider value for money in the process of commissioning school places.

The School Capacity return asks local authorities to provide forecasts of pupil numbers that exclude pupils brought to the area by new housing development: there is an expectation that provision for these pupils will be funded through contributions provided by the developers. When planning with the district and borough councils we are mindful of their need to meet the housing demand, versus our need to provide the infrastructure. The County is committed to ensuring we maximize our income to provide the best quality school buildings we are able to.

Warwickshire's Schools Forum has agreed to retain centrally a level of revenue funding for schools that have been asked to expand. This growth fund is to support those schools that the local authority has specifically asked to take on additional pupils: the usual payment is £32,930 to support the initial cost of employing staff and purchasing resources.

## **Early education and childcare provision**

Councils have a duty, so far as is reasonably practicable, to secure sufficient childcare for working parents, or parents who are studying or training for employment, for children aged 0-14 (or up to 18 for disabled children), and to secure sufficient free early years provision for eligible young children. All children are entitled to free early education for 15 hours per week for 38 weeks per year from the start of the term after their 3rd birthday until they start school. From 2013, Councils were also required to secure free early education places for eligible 2 year olds for 15 hours per week for 38 weeks per year. Approximately 20% of two year olds qualified for these places under the first phase of the scheme, (1,000 places for Warwickshire), and this rose to approximately 40% in 2014 (a further 1,200 places) as the entitlement was extended.

## **SEND Provision**

Currently too many of Warwickshire's children and young people with the most severe and complex special educational needs and disabilities (SEND) are unable to access appropriate local education provision to meet their needs. The impact of this can be a dislocation from the child's local community and missed opportunities to build a peer group of friends that will help sustain the child through into adulthood. We wish to increase the range of high quality local options available for families and minimise the need for unnecessary travel far from

home. A recent SEND needs analysis has identified significant gaps in Warwickshire's continuum of provision in comparison with other areas, particularly in a lack of resourced SEN provision or designated SEN hubs, so the development of in-house provision and the development of the external market are key priorities. The consequence of these gaps is an over-reliance on non-statutory, independent provision often far from the pupil's home.



## Part 2: Policies Practices and Principles

### Overview

When considering expansions there are a number of factors taken into consideration as set out below;

- Long term planning applications in the adjoining area
- Locality of schools in relation to demand
- Locality of other schools in the area
- Net capacity of schools
- Current admissions arrangements
- Current trends of intake for particular schools
- Current use of rooms within schools
- Size of site
- Condition of building
- Expansion opportunities available within various school sites and cost
- Access and Egress to site
- Leadership and Governance
- School position in terms of pupil attainment
- Current number of forms of entry
- Infant /Junior split and location of sites to each other
- Impact on other local schools
- Early Years provision

When planning with the district and borough councils we are mindful of their need to meet the housing demand, versus our need to provide the infrastructure. We are committed to ensuring we maximize our income to provide the best quality school buildings we are able to.

Where possible, we will consult with all schools in the area and decide upon the most cost effective way forward.

We are committed to ensuring all schools are kept informed with regards to long term school planning. We will, where possible, design buildings which enable schools to be flexible in the longer term regarding use of buildings and grounds.

Each year we will communicate to all schools our proposals for new schools, expansions and the long term demand by area. Schools will be invited to comment and declare an interest in expansion.

We are committed, where expansions and funds allow, to addressing the following areas during extensions or rebuilds;

- Remove half forms of entry
- Address defects and DDA noncompliance
- Amalgamate infant and junior schools

- Increase 1FE to 2FE
- Address safeguarding issues relating to buildings and grounds
- Incorporate SEN facilities within main stream schools

It is not always possible to address all of these issues but the principles behind them are discussed in more detail in the following sections.

## **School Characteristics**

### **Size**

The minimum size for a primary school will vary across the county; however, it is an important consideration when looking to ensure the long-term viability of schools. In the County's urban centres, primary schools smaller than one form of entry (i.e. one class per year group) are likely to struggle financially. When looking at expanding primary school provision, the local authority will look to expand primary schools from 1FE to 2FE where possible to help with the financial viability of those schools. Where new schools are required, the preferred model will be for 2FE primaries, although specific contexts may require smaller or larger schools to be provided. The largest primary school in Warwickshire is 4FE and it is unlikely that any school will grow larger than this unless under exceptional circumstances.

Similarly, the appropriate size for a secondary school will vary depending on where it is in the county; smaller secondary schools may be appropriate in more rural areas but could still struggle from a financial point of view. It is unlikely that any new secondary school would be built at less than six forms of entry (180 places per year group). The largest secondary school in Warwickshire is currently 10 forms of entry and it is unlikely that any school will built bigger than this unless under exceptional circumstances.

### **Organisation**

Warwickshire has a number of separate infant and junior schools but is committed to creating all-through primary schools where the opportunities allow; as this is considered a more effective and efficient way to organise provision. There is no requirement for infant and junior schools to amalgamate but should any schools wish to explore the possibility of creating all-through primary provision, this will be fully considered.

Warwickshire now has one mainstream all-through school from age 4 to age 18 following the expansion of an existing secondary school. This model is seen as an effective way of creating new primary age places in areas of high demand.

A number of schools in the County are operating with half forms of entry (e.g. admit 45 pupils per year group) meaning they have to organise into mixed age classes. Whilst it is possible to operate in this manner, it is more challenging for teachers and can be unpopular with parents. The local authority will look to remove half forms of entry where possible, particularly through its expansion programmes.

A very small number of schools are based on split sites that are a significant distance from each other – where possible, the local authority will look to address this.

## **Types**

In terms of sufficiency planning, there is no real difference in the way the different types of schools are considered. For example, the local authority has already on a number of occasions invested capital allocations in the expansion of Academies and this is likely to continue. If schools are serving an area where there is a need for additional places, the local authority will consider them in their expansion plans regardless of their status.

Warwickshire now has two Free Schools – both primary schools – and it is likely that more will be opened over the next few years. Whilst the decision as to where and when a Free School can open is outside local authority control, the County aims to work with prospective providers to help ensure that new schools are opened in areas where there is likely to be demand for that provision and that they will be accessible in a fair way to local families.

## **Supply and Demand**

### **Surplus**

Despite patterns of recent population growth there remain schools in Warwickshire with high levels of surplus places. The local authority recognises the need to remove excessive levels of surplus places in order to sustain and strengthen schools for their local communities and will aim to support schools in doing this by looking at how they might use existing spare space for other purposes, for example. The availability of spare space at local schools will always be considered before any expansion proposals are put forward.

Whilst excessive surplus is a problem so too is the lack of a certain level of surplus places to allow for flexibility in the system to meet parental preference, enable in-year transfers and help families moving to an area find a place for each of their children at the same school. The aspirational target for Warwickshire is for the supply of places to exceed demand by approximately 4% with as even a spread across the County as possible. This has been factored in to all of the planning and analysis set out in Part Four of this strategy.

### **Expansions**

Where a predicted shortfall of places has been identified, the most common solution is to expand an existing school. Where possible, we will consult with all schools in the area and decide upon the most cost effective way forward after considering expansion opportunities available within various school sites and costs.

There are a number of factors taken into consideration as set out below:

| Criterion |  | How Measured   | Source                                    |
|-----------|--|--|---|
| 1         | Access –<br>Serving Area<br>of Need                      | Pupil number projections.  | Education & Learning                      |
|           |  | Locality of schools in relation to demand.   | Education & Learning                      |
|           |  | Long term planning applications in the adjoining area.   | Education & Learning                      |
|           |  | Proposed admission arrangements.   | Education & Learning                      |
| 2         | Popularity   | Data collected on parental preferences.  | Education & Learning                      |
|           |  | Current trends of intake for particular schools.   | Education & Learning                      |
| 3         | Suitability of<br>site and<br>buildings for<br>expansion | Net capacity of schools.   | Education & Learning                      |
|           |  | Size of site.  | Physical Assets                           |
|           |  | Capacity of existing M&E to accommodate expansion requirements.  | Physical Assets /<br>School               |
|           |  | Planning issues including highways and transport impact.   | Highways / Other                          |
|           |  | Potential for the site to bring investment that would support the development.                           | Education & Learning /<br>Physical Assets |
|           |  | Barriers to expansion including listed buildings, grant funding conditions, third-party impact.          | Physical Assets                           |
|           |  | Demonstrable commitment to making maximum use of the existing school buildings.                          | School                                    |
| 4         | Leadership<br>capacity &<br>Quality of<br>provision      | OFSTED reports.  | Education & Learning                      |
|           |  | School position in terms of pupil attainment.  | Education & Learning                      |
|           |  | Capacity to maintain standards and manage change during build programme.                                 | Education & Learning /<br>School          |
| 5         | Consequential<br>impact of<br>project                    | Impact on pupil numbers at other local provision.  | Education & Learning                      |
|           |  | Potential for expansion project to improve condition need of existing buildings within funding envelope. | Physical Assets                           |
|           |  | Current number of forms of entry.  | Education & Learning                      |
|           |  | Infant/junior split and location of sites to each other  | Education & Learning                      |
|           |  | Early Years provision.   | Education & Learning                      |

## New schools

The need for new schools often arises when there are no opportunities to expand existing local schools or where new housing developments are expected to bring large numbers of new families to an area. It is the responsibility of the local authority to seek sponsors for these new schools so the County will be looking to engage with potential suitable organisations over the next few years including existing high-quality providers within Warwickshire.

## Specific Requirements

### SEND

A key strategic intention of Warwickshire County Council is for pupils with a statement of special educational needs or Education, Health & Care Plan (EHC) to attend good quality local education provision. The County is therefore actively developing opportunities to create enhanced provision within mainstream primary and secondary schools, as well as utilising the expertise in special schools to create additional specialist provision in other appropriate

locations. Where appropriate and reasonable to do so, we will make adaptations and alterations; provide equipment and other such support as pupils need to enable them to flourish alongside their peers.

These actions are expected to reduce the number of pupils with SEND whose needs are met in independent specialist provision and to increase the proportion of pupils whose additional needs are met in-County.

Where capital is being invested and funds allow, the County is committed to addressing the following areas:

- Defects and DDA noncompliance
- Safeguarding issues relating to buildings and grounds

## **School Performance**

There is a clear link between school organisation, place planning and school performance and this strategy will help ensure that there is a good supply of high-quality places across Warwickshire. However, there are sometimes conflicting obligations in trying to satisfy increased demand for places and improving school performance. A key consideration in the expansion of schools will be the management and organisational capacity to maintain or improve standards with an extended school roll. The local authority is committed to increasing the supply of good or outstanding places. This does not however, necessarily preclude schools if they have been unable to reach this level through lack of expansion. In these circumstances the school must be able to show how the expansion could help improve performance (for example through the increased revenue that expansion would bring).

## Part 3: Current Provision

### Early Year Settings

Early years' education and childcare is provided in nursery schools, school nursery classes and in private, voluntary and independent settings, including childminders. There are currently 6 maintained nursery schools, 59 maintained nursery classes (including those making provision for children with SEN/D) and 334 private, voluntary and independent (PVI) providers registered to provide early education places for funded 2, 3 and 4 year olds. PVI providers can be categorized as follows:

| Type of Provision                    | Number     |
|--------------------------------------|------------|
| Childminders                         | 74         |
| Day Nursery                          | 129        |
| Exempt                               | 1          |
| Nursery Units of Independent Schools | 8          |
| Nurture Nursery                      | 17         |
| Other Exceptional                    | 1          |
| Pre-School                           | 97         |
| Private Nursery School               | 7          |
| <b>Total</b>                         | <b>334</b> |

[Warwickshire's Childcare Sufficiency Assessment 2014/15](#) sets out the gap analysis and action plan for ensuring that sufficient places are made available, and it closely aligns to the Schools Sufficiency Strategy.

### Primary Schools

As at September 2015, Warwickshire has 191 primary phase schools with 1 all-through school with a primary phase section.

| Type                 | Infant    | Junior    | Primary    | All-Through (Primary Section) | Total      |
|----------------------|-----------|-----------|------------|-------------------------------|------------|
| Community            | 19        | 8         | 50         | 0                             | 77         |
| Voluntary Controlled | 2         | 3         | 36         | 0                             | 41         |
| Voluntary Aided      | 1         | 1         | 29         | 0                             | 31         |
| Academy Converter    | 2         | 1         | 16         | 1                             | 20         |
| Academy Sponsored    | 0         | 5         | 12         | 0                             | 17         |
| Foundation           | 1         | 1         | 2          | 0                             | 4          |
| Free School          | 0         | 0         | 2          | 0                             | 2          |
| Studio School        | 0         | 0         | 0          | 0                             | 0          |
| <b>Total</b>         | <b>25</b> | <b>19</b> | <b>147</b> | <b>1</b>                      | <b>192</b> |

## Secondary Schools

As at September 2015, Warwickshire has 35 secondary phase schools with 1 all-through school with a secondary phase section. N.B: As the County's only all-through school, Aylesford School has been included in the primary school table above and in the table below (under the Age 11-18 category) despite being a single establishment.

| Type                 | Age 11-16 | Age 11-18 | Age 14-19 | Grammar  | Total     |
|----------------------|-----------|-----------|-----------|----------|-----------|
| Academy Converter    | 3         | 14        | 0         | 5        | 22        |
| Academy Sponsored    | 3         | 3         | 0         | 0        | 6         |
| Community            | 0         | 3         | 0         | 0        | 3         |
| Voluntary aided      | 0         | 2         | 0         | 0        | 2         |
| Foundation           | 1         | 1         | 0         | 0        | 2         |
| Studio School        | 0         | 0         | 1         | 0        | 1         |
| Voluntary controlled | 0         | 0         | 0         | 0        | 0         |
| Free school          | 0         | 0         | 0         | 0        | 0         |
| <b>Total</b>         | <b>7</b>  | <b>23</b> | <b>1</b>  | <b>5</b> | <b>36</b> |

## Special Schools

As at September 2015, Warwickshire has 10 special schools including the recently opened new special school in Nuneaton.

| Type                 | Primary  | Secondary | All-Through | Total     |
|----------------------|----------|-----------|-------------|-----------|
| Community            | 1        | 2         | 4           | 7         |
| Academy Converter    | 1        | 1         | 0           | 2         |
| Academy Sponsored    | 0        | 0         | 1           | 1         |
| Foundation           | 0        | 0         | 0           | 0         |
| Free school          | 0        | 0         | 0           | 0         |
| Studio School        | 0        | 0         | 0           | 0         |
| Voluntary aided      | 0        | 0         | 0           | 0         |
| Voluntary controlled | 0        | 0         | 0           | 0         |
| <b>Total</b>         | <b>2</b> | <b>3</b>  | <b>5</b>    | <b>10</b> |

## Part Four: Planning Data

### Introduction

The following section contains data on current and predicted pupil numbers along with plans to ensure that there will be sufficient provision across Early Years, Mainstream and Special schools and settings up to and including September 2018.

### Section 1: Early Years Provision

Information on pupil numbers and expansion requirements for early years is presented by Children's Centre Groups within each Education Area to promote integrated working between settings and Children's Centres.

#### Central Area

##### Children's Centre Group Demographic Data

| Children's Centre Area Name                     | Age 4 | Age 3 | Age 2 | Age 1 |
|---|-------|-------|-------|-------|
| <b>Kenilworth</b>                               |       |       |       |       |
| Kenilworth Children's Centre & Nursery school   | 131   | 125   | 124   | 107   |
| St. Johns Children's Centre (Kenilworth)        | 152   | 192   | 144   | 118   |
| <b>Leamington</b>                               |       |       |       |       |
| Kingsway Children's Centre                      | 264   | 267   | 294   | 238   |
| Lillington Children's Centre & Community Centre | 309   | 307   | 294   | 309   |
| Sydenham Children's Centre                      | 147   | 154   | 154   | 156   |
| Whitnash Children's Centre                      | 159   | 190   | 164   | 166   |
| <b>Southam</b>                                  |       |       |       |       |
| Southam & District Children's Centre            | 191   | 154   | 178   | 159   |
| <b>Warwick</b>                                  |       |       |       |       |
| Newburgh & Westgate Children's Centre           | 211   | 219   | 194   | 191   |
| Warwick Children's Centre & Nursery school      | 220   | 216   | 205   | 184   |
| Area Total                                      | 1784  | 1824  | 1751  | 1628  |

### Action Planning

The Action Plan within the Childcare Sufficiency Assessment highlights the following aspects of the early years and childcare sector where the local authority needs to focus its support for the forthcoming year:

| Type of provision                   | Geographic area   | Action required   |
|-------------------------------------|---|---|
| Funded 2 Year Old places            | South Leamington where new housing is being established             | <ol style="list-style-type: none"> <li>1. Prospective new providers to be signposted to gap areas.</li> <li>2. Existing providers to be encouraged to expand via support with financial planning and (during 2015/16 only) targeted use of trajectory funding</li> <li>3. New and existing childminders to be encouraged to take funded children</li> </ol> |
| Funded places for 3 and 4 year olds | Parts of South Leamington including Whitnash, Kingsway and Sydenham | <ol style="list-style-type: none"> <li>1. As above.</li> <li>2. Trajectory funding is not available for stimulating the market for new places for 3 and 4 year olds, so there will need to be a strong focus on supporting providers with financial planning.</li> </ol>  |



| Type of provision | Geographic area | Action required  |
|-------------------|-----------------|--|
| After School Care | All             | <ol style="list-style-type: none"> <li>1. Encourage schools to commission external providers if they do not wish to provide a service directly themselves, and offer support with financial planning and provider selection process.</li> <li>2. Sign post child-minders to areas where no existing child-minder pick-ups from schools exist.</li> <li>3. Support schools who wish to open their own directly run provision, by clarifying legal requirements and advising on financial planning.</li> </ol> |

## Eastern Area

### Children's Centre Group Demographic Data

| Children's Centre Area Name            | Age 4 | Age 3 | Age 2 | Age 1 |
|--|-------|-------|-------|-------|
| Boughton Leigh Children's Centre       | 130   | 142   | 136   | 151   |
| Cawston Children's Centre              | 170   | 158   | 133   | 139   |
| Claremont Children's Centre            | 223   | 207   | 209   | 199   |
| Dunchurch & District Children's Centre | 99    | 81    | 62    | 83    |
| Hillmorton Children's Centre           | 192   | 165   | 150   | 159   |
| Newbold Riverside Children's Centre    | 216   | 208   | 223   | 203   |
| Oakfield Children's Centre             | 195   | 220   | 210   | 199   |
| Wolston Children's Centre              | 99    | 91    | 68    | 82    |
| Area Total                             | 1324  | 1272  | 1191  | 1215  |

### Action Planning

The Action Plan within the Childcare Sufficiency Assessment highlights the following aspects of the early years and childcare sector where the local authority needs to focus its support for the forthcoming year:

| Type of provision                   | Geographic area  | Action required  |
|-------------------------------------|--|--|
| Funded 2 Year Old places            | Rugby  | <ol style="list-style-type: none"> <li>1. Prospective new providers to be signposted to gap areas.</li> <li>2. Existing providers to be encouraged to expand via support with financial planning and (during 2015/16 only) targeted use of trajectory funding.</li> <li>3. New and existing child-minders to be encouraged to take funded children.</li> </ol>   |
| Funded places for 3 and 4 year olds | Most areas of Rugby including Claremont, Oakfield, Newbold and Long Lawford. | <ol style="list-style-type: none"> <li>1. As above.</li> <li>2. Trajectory funding is not available for stimulating the market for new places for 3 and 4 year olds, so there will need to be a strong focus on supporting providers with financial planning.</li> </ol>   |
| After School Care                   | All  | <ol style="list-style-type: none"> <li>1. Encourage schools to commission external providers if they do not wish to provide a service directly themselves, and offer support with financial planning and provider selection process.</li> <li>2. Sign post child-minders to areas where no existing child minder pick-ups from schools exist.</li> <li>3. Support schools who wish to open their own directly run provision, by clarifying legal requirements and advising on financial planning.</li> </ol> |

| Type of provision    | Geographic area   | Action required   |
|----------------------|---|---|
| Quality of provision | Oakfield area of Rugby; other areas as flagged amber in the Sufficiency Report including Boughton Leigh, Claremont, Newbold, Wolston. | <ol style="list-style-type: none"> <li>1. We will aim for at least 80% of provision to be Good or Outstanding. The Childcare Sufficiency Assessment sets out the quality of early years providers by Ofsted category on p.11.</li> <li>2. Partnership work with the EY Quality team to target support at settings falling below this level. LA support to improve can only be focussed on requirements as identified in the provider's Ofsted inspection report.</li> <li>3. Removal or suspension of funding from settings in receipt of an 'Inadequate' judgement.</li> </ol> |

## Northern Area

### Children's Centre Group Demographic Data

| Children's Centre Area Name            | Age 4 | Age 3 | Age 2 | Age 1 |
|--|-------|-------|-------|-------|
| Atherstone Early Years Centre          | 155   | 138   | 166   | 128   |
| Coleshill Children's Centre            | 121   | 143   | 140   | 119   |
| Kingsbury Children's Centre            | 83    | 88    | 80    | 84    |
| Mancetter Sure Start Children's Centre | 170   | 173   | 149   | 149   |
| Polesworth Children's Centre           | 125   | 111   | 104   | 101   |
| Area Total                             | 654   | 653   | 639   | 581   |

## Action Planning

The Action Plan within the Childcare Sufficiency Assessment highlights the following aspects of the early years and childcare sector where the local authority needs to focus its support for the forthcoming year:

| Type of provision                   | Geographic area       | Action required  |
|-------------------------------------|-----------------------|--|
| Funded places for 3 and 4 year olds | Mancetter reach area. | <ol style="list-style-type: none"> <li>1. As above.</li> <li>2. Trajectory funding is not available for stimulating the market for new places for 3 and 4 year olds, so there will need to be a strong focus on supporting providers with financial planning.</li> </ol>   |
| After School Care                   | All                   | <ol style="list-style-type: none"> <li>1. Encourage schools to commission external providers if they do not wish to provide a service directly themselves, and offer support with financial planning and provider selection process.</li> <li>2. Sign post childminders to areas where no existing childminder pick-ups from schools exist.</li> <li>3. Support schools who wish to open their own directly run provision, by clarifying legal requirements and advising on financial planning.</li> </ol> |

## Nuneaton and Bedworth Area

### Children's Centre Group Demographic Data

| Children's Centre Area Name                | Age 4 | Age 3 | Age 2 | Age 1 |
|--|-------|-------|-------|-------|
| <b>Bedworth</b>                            |       |       |       |       |
| Bedworth Heath Children's Centre & Nursery | 156   | 145   | 137   | 149   |
| Rainbow Children's Centre                  | 81    | 46    | 36    | 31    |
| <b>Nuneaton</b>                            |       |       |       |       |
| Abbey Children's Centre                    | 139   | 127   | 162   | 112   |
| Bulkington Children's Centre               | 63    | 85    | 70    | 87    |
| Camp Hill Children's Centre                | 138   | 159   | 138   | 144   |
| Ladybrook Children's Centre                | 198   | 155   | 161   | 161   |
| Park Lane Children's Centre                | 154   | 110   | 131   | 112   |
| Riversley Park Children's Centre           | 243   | 241   | 262   | 224   |
| <b>St Michael's</b>                        |       |       |       |       |
| St. Michael's Children's Centre            | 171   | 167   | 155   | 155   |
| <b>Stockingford</b>                        |       |       |       |       |
| Stockingford Children's Centre             | 245   | 249   | 230   | 219   |
| Area Total                                 | 1588  | 1484  | 1482  | 1394  |

### Action Planning

The Action Plan within the Childcare Sufficiency Assessment highlights the following aspects of the early years and childcare sector where the local authority needs to focus its support for the forthcoming year:

| Type of provision        | Geographic area | Action required   |
|--------------------------|-----------------|---|
| Funded 2 Year Old places | Camp Hill       | <ol style="list-style-type: none"> <li>1. Prospective new providers to be signposted to gap areas.</li> <li>2. Existing providers to be encouraged to expand via support with financial planning and (during 2015/16 only) targeted use of trajectory funding.</li> <li>3. New and existing childminders to be encouraged to take funded children.</li> </ol>   |
| After School Care        | All             | <ol style="list-style-type: none"> <li>1. Encourage schools to commission external providers if they do not wish to provide a service directly themselves, and offer support with financial planning and provider selection process.</li> <li>2. Sign post childminders to areas where no existing childminder pick-ups from school exist.</li> <li>3. Support schools who wish to open their own directly run provision, by clarifying legal requirements and advising on financial planning.</li> </ol> |

| Type of provision    | Geographic area  | Action required   |
|----------------------|--|---|
| Affordable childcare | Abbey, Camp Hill, Riversley Park, St Michael's, Stockingford   | <ol style="list-style-type: none"> <li>1. Support providers in areas of deprivation, where low income families cannot afford to pay market rates for childcare but provision is still required.</li> <li>2. Encourage regular financial forecasting and use of strong debt management policies, e.g. by providing examples and templates.</li> <li>3. Support settings to maximise available income. (e.g. Early Years Pupil Premium by providing publicity to raise parents' awareness of benefits of take up for their child).</li> <li>4. Work with Family Information Service to promote tax credits and other Government help with childcare costs to families, with a focus on identified areas.</li> </ol> |
| Quality of provision | Camp Hill, Rainbow area of Bedworth; other areas as flagged amber in the Sufficiency Report including Riversley Park, Stockingford, Bulkington | <ol style="list-style-type: none"> <li>1. We will aim for at least 80% of provision to be Good or Outstanding. The Childcare Sufficiency Assessment sets out the quality of early years providers by Ofsted category on p.11.</li> <li>2. Partnership work with the EY Quality team to target support at settings falling below this level. LA support to improve can only be focussed on requirements as identified in the provider's Ofsted inspection report.</li> <li>3. Removal or suspension of funding from settings in receipt of an 'Inadequate' judgement.</li> </ol>   |

## Southern Area

### Children's Centre Group Demographic Data

| Children's Centre Area Name                   | Age 4 | Age 3 | Age 2 | Age 1 |
|---|-------|-------|-------|-------|
| <b>South Warwickshire</b>                     |       |       |       |       |
| Badger Valley Children's Centre               | 128   | 141   | 123   | 117   |
| Lighthorne Heath & District Children's Centre | 109   | 110   | 111   | 106   |
| Wellies Children's Centre                     | 151   | 143   | 124   | 118   |
| <b>South West Warwickshire</b>                |       |       |       |       |
| Alcester & District Children's Centre         | 153   | 142   | 170   | 148   |
| Clopton and District Children's Centre        | 188   | 173   | 184   | 142   |
| Stratford Children's Centre                   | 152   | 144   | 131   | 124   |
| Studley & District Children's Centre          | 158   | 124   | 127   | 123   |
| Area Total                                    | 1039  | 977   | 970   | 878   |

## Action Planning

The Action Plan within the Childcare Sufficiency Assessment highlights the following aspects of the early years and childcare sector where the local authority needs to focus its support for the forthcoming year:

| Type of provision    | Geographic area   | Action required   |
|----------------------|---|---|
| After School Care    | All   | <ol style="list-style-type: none"> <li>1. Encourage schools to commission external providers if they do not wish to provide a service directly themselves, and offer support with financial planning and provider selection process.</li> <li>2. Sign post child-minders to areas where no existing child minder pick-ups from schools exist.</li> <li>3. Support schools who wish to open their own directly run provision, by clarifying legal requirements and advising on financial planning.</li> </ol>  |
| Quality of provision | Areas as flagged amber in the Sufficiency Report including Alcester | <ol style="list-style-type: none"> <li>1. We will aim for at least 80% of provision to be Good or Outstanding. The Childcare Sufficiency Assessment sets out the quality of early years providers by Ofsted category on p.11.</li> <li>2. Partnership work with the EY Quality team to target support at settings falling below this level. LA support to improve can only be focussed on requirements as identified in the provider's Ofsted inspection report.</li> <li>3. Removal or suspension of funding from settings in receipt of an 'Inadequate' judgement.</li> </ol> |

## Section 2: Mainstream Schools

In this section, information is provided by Education Area on the latest demographic patterns, numbers on roll, pupil number forecasts and likely expansion requirements. The Education Areas are slightly different to those used to group the Children's Centres in the section above and contain the following schools:

### Primary Schools

| Education Area | Planning Area    | Primary Schools  |
|----------------|------------------|--|
| Central        | Kenilworth       | All Saints CofE (VA) Primary; Burton Green CofE Primary; Clinton Primary; Park Hill Junior; Priors Field Primary; St Augustine's Catholic Primary; St John's Primary; St Nicholas CofE Primary; Thorns Community Infant  |
|                | North Leamington | Brookhurst Primary; Cubbington CofE Primary; Lillington Primary; Milverton Primary; Our Lady and St Teresa's Catholic Primary; St Paul's CofE Primary; St Peter's Catholic Primary; Telford Infant; Telford Junior   |
|                | South Leamington | Bishops Tachbrook CofE Primary; Briar Hill Infant; Clapham Terrace Primary; Kingsway Primary; Radford Semele CofE Primary; Shrubland Street Primary; St Anthony's Catholic Primary; St Joseph's Catholic Primary; St Margaret's CofE Junior; St Patrick's Catholic Primary; Sydenham Primary; Whitnash Primary |
|                | Southam          | Bishops Itchington Primary; Harbury CofE Primary; Long Itchington CofE Primary; Southam Primary; Southam St James CofE Primary; St Lawrence CofE Primary; St Mary's Catholic Primary; Stockton Primary; The Priors   |
|                | Warwick          | All Saints' CofE Junior; Budbrooke Primary; Coten End Primary; Emscote Infant; Newburgh Primary; St Mary Immaculate Catholic Primary; Westgate Primary; Woodloes Primary   |
|                | Warwick Rural    | Lapworth CofE Primary; The Ferncumbe CofE Primary  |

| Education Area      | Planning Area        | Primary Schools   |
|---------------------|----------------------|---|
| Eastern             | Rugby North Central  | Abbots Farm Infant; Abbots Farm Junior; Eastlands Primary; English Martyrs Catholic Primary; Hillmorton Primary; Northlands Primary; Paddox Primary; St Andrew's Benn CofE Primary  |
|                     | Rugby North of River | Boughton Leigh Infant; Boughton Leigh Junior; Brownsover Infant; Clifton-upon-Dunsmore CofE Primary; Riverside Academy  |
|                     | Rugby Rural          | Binley Woods Primary; Dunchurch Boughton CofE Junior; Dunchurch Infant; Knightlow CofE Primary; Leamington Hastings CofE Infant; Our Lady's Catholic Primary; Provost Williams CofE Primary; The Revel CofE Primary; Wolston St Margaret's CofE Primary |
|                     | Rugby South Central  | Long Lawford Primary; Oakfield Primary; Rokeby Primary; St Marie's Catholic Primary; St Matthew's Bloxam CofE Primary; St Oswald's CofE Primary   |
|                     | Rugby West           | Bawnmore Infant; Bilton CofE Junior; Bilton Infant; Cawston Grange Primary; Henry Hinde Infant; Henry Hinde Junior  |
| North Warwickshire  | Arley                | Arley Primary; Bournebrook CofE Primary   |
|                     | Atherstone           | Outwoods Primary; Racemeadow Primary; St Benedict's Catholic Primary; Woodside CofE Primary   |
|                     | Coleshill            | Coleshill CofE Primary; Curdworth Primary; High Meadow Infant; Shustoke CofE Primary; St Edward's Catholic Primary; Water Orton Primary   |
|                     | Kingsbury            | Hurley Primary; Kingsbury Primary; Wood End Primary   |
|                     | Polesworth           | Austrey CofE Primary; Birchwood Primary; Dordon Primary; Newton Regis CofE Primary; The Nethersole CofE Academy; Warton Nethersole's CofE   |
| Nuneaton & Bedworth | Bedworth 1           | Arden Forest Infant; Exhall Cedars Infant; Goodyers End Primary; Keresley Newland Primary; Newdigate Primary; St Giles Junior; St James' CofE Junior; Wheelwright Lane Primary; Wolvey CofE Primary   |
|                     | Bedworth 2           | All Saints CofE Infant; Canon Evans CofE Infant; Canon Maggs CofE Junior; Race Leys Infant; Race Leys Junior; St Francis Catholic Primary; St Michael's CofE Primary  |
|                     | Nuneaton 1           | Camp Hill Primary; Galley Common Infant; Michael Drayton Junior; Nathaniel Newton Infant; Nursery Hill Primary; Park Lane Primary; St Anne's Catholic Primary   |
|                     | Nuneaton 2           | Abbey CofE Infant; Chilvers Coton Infant; Croft Junior; Glendale Infant; Middlemarch School; Queen's CofE Academy; St Paul's CofE Primary; Stockingford Primary School  |
|                     | Nuneaton 3           | All Saints CofE Primary; Chetwynd Junior; Milby Primary; Our Lady of the Angels Catholic Infant; St Joseph's Catholic Junior; St Nicolas CofE Primary; Weddington Primary; Wembrook Primary; Whitestone Infant  |
| Southern            | Alcester             | Coughton CofE Primary; Great Alne Primary; Our Lady's Catholic Primary; St Nicholas' CofE Primary; Tudor Grange Primary   |
|                     | Bidford              | Bidford-on-Avon CofE Primary; Dunnington CofE Primary; Salford Priors CofE Primary; Temple Grafton CofE Primary   |
|                     | Henley               | Claverdon Primary; Henley-In-Arden CofE Primary; St Mary's Catholic Primary; Tanworth-in-Arden CofE Primary; Wootton Wawen CofE Primary   |
|                     | Kineton              | Ettington CofE Primary; Kineton CofE (VA) Primary; Lighthorne Heath Primary; Moreton Morrell CofE Primary; Temple Herdewyke Primary; The Dasset CofE Primary; Tysoe CofE Primary; Wellesbourne CofE Primary   |
|                     | Shipston             | Acorns Primary; Brailes CofE Primary; Ilmington CofE Primary; Newbold and Tredington CofE Primary; Quinton Primary; Shipston-on-Stour Primary   |
|                     | Stratford Rural      | Barford St Peter's CofE Primary; Hampton Lucy CofE Primary; Loxley CofE Primary; Snitterfield Primary; Welford-on-Avon Primary; Wilmcote CofE Primary; Wolverton Primary School   |

| Education Area | Planning Area  | Primary Schools   |
|----------------|----------------|---|
|                | Stratford Town | Alveston CofE Primary; Bishopton Primary; Bridge Town Primary; Shotton St Andrew's CofE Primary; St Gregory's Catholic Primary; Stratford-upon-Avon Primary; The Willows CofE Primary; Thomas Jolyffe Primary |
|                | Studley        | Mappleborough Green CofE Primary; St Mary's Catholic Primary; Studley Infants' School; Studley St Mary's Academy  |

## Secondary Schools

| Education Area      | Planning Area          | Secondary Schools  |
|---------------------|------------------------|--|
| Central             | Kenilworth             | Kenilworth School and Sports College   |
|                     | Southam                | Southam College  |
|                     | Warwick & Leamington   | Aylesford School and Sixth Form College; Champion School; Myton School; North Leamington School; Trinity Catholic School   |
| Eastern             | Rugby South of Railway | Ashlawn School; Bilton School; Harris CofE Academy; Lawrence Sheriff School; Rugby High School   |
|                     | Rugby North of Railway | The Avon Valley School and Performing Arts College   |
| North Warwickshire  | North Warwickshire     | Kingsbury School, A Specialist Science College with Mathematics; The Coleshill School; The Polesworth School; The Queen Elizabeth Academy  |
| Nuneaton & Bedworth | Bedworth               | Ash Green School; Nicholas Chamberlaine Technology College   |
|                     | Hartshill              | Hartshill School   |
|                     | Nuneaton               | Etone College; Higham Lane School, A Business & Enterprise College; Midland Studio College; St Thomas More Catholic School and Sixth Form College; The George Eliot School; The Nuneaton Academy |
| Southern            | Alcester & Studley     | Alcester Academy; Alcester Grammar School; St Benedict's Catholic High School; Studley High School - A Humanities and Music College  |
|                     | Henley In Arden        | Henley In Arden School   |
|                     | Kineton                | Kineton High School  |
|                     | Shipston               | Shipston High School   |
|                     | Stratford              | King Edward VI School; Stratford Girls' Grammar; Stratford Upon Avon School  |

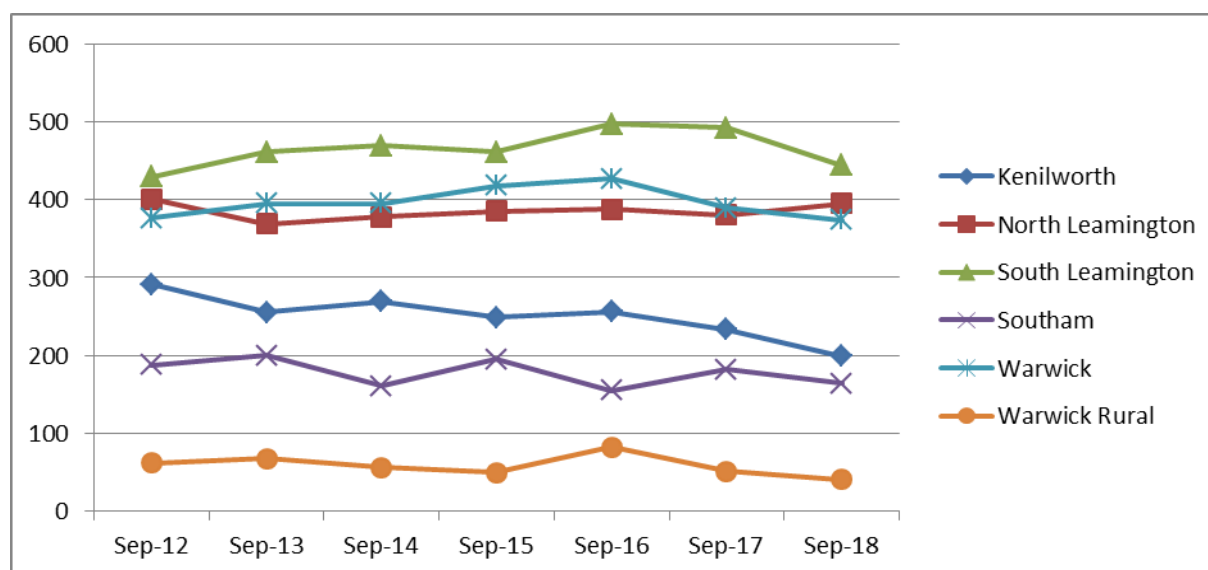
When considering the following sets of data, it is important to be aware that, wherever possible, the local authority will look to maintain a small level of surplus places within each area to facilitate in-year movement, help meet parental preference and keep family groups together. A level of around 4% surplus is preferred in a particular area.

## Central Area Demographics

- Births**

In the Central Area the annual number of births seems to have peaked in 2011/12 (these children start school in September 2016) with the total number falling by 10% in just 2 years. The number of births per planning area is shown in the table and chart below:

| Birth Year                  | 2007/08     | 2008/09     | 2009/10     | 2010/11     | 2011/12     | 2012/13     | 2013/14     |
|-----------------------------|-------------|-------------|-------------|-------------|-------------|-------------|-------------|
| Start School                | Sep-12      | Sep-13      | Sep-14      | Sep-15      | Sep-16      | Sep-17      | Sep-18      |
| Kenilworth                  | 291         | 255         | 269         | 249         | 256         | 233         | 199         |
| North Leamington            | 401         | 369         | 378         | 385         | 388         | 380         | 395         |
| South Leamington            | 429         | 461         | 469         | 461         | 497         | 492         | 444         |
| Southam                     | 188         | 200         | 161         | 195         | 155         | 182         | 164         |
| Warwick                     | 376         | 395         | 395         | 418         | 427         | 389         | 374         |
| Warwick Rural               | 62          | 68          | 56          | 50          | 82          | 51          | 41          |
| <b>Central Area Total</b>   | <b>1747</b> | <b>1748</b> | <b>1728</b> | <b>1758</b> | <b>1805</b> | <b>1727</b> | <b>1617</b> |
| Change Since Previous Year  | -           | 0%          | -1%         | 2%          | 3%          | -4%         | -6%         |
| Change Since September 2012 | -           | 0%          | -1%         | 1%          | 3%          | -1%         | -7%         |



- Housing**

The table below sets out the estimated impact of new housing in terms of additional pupils brought to the area in each year group.

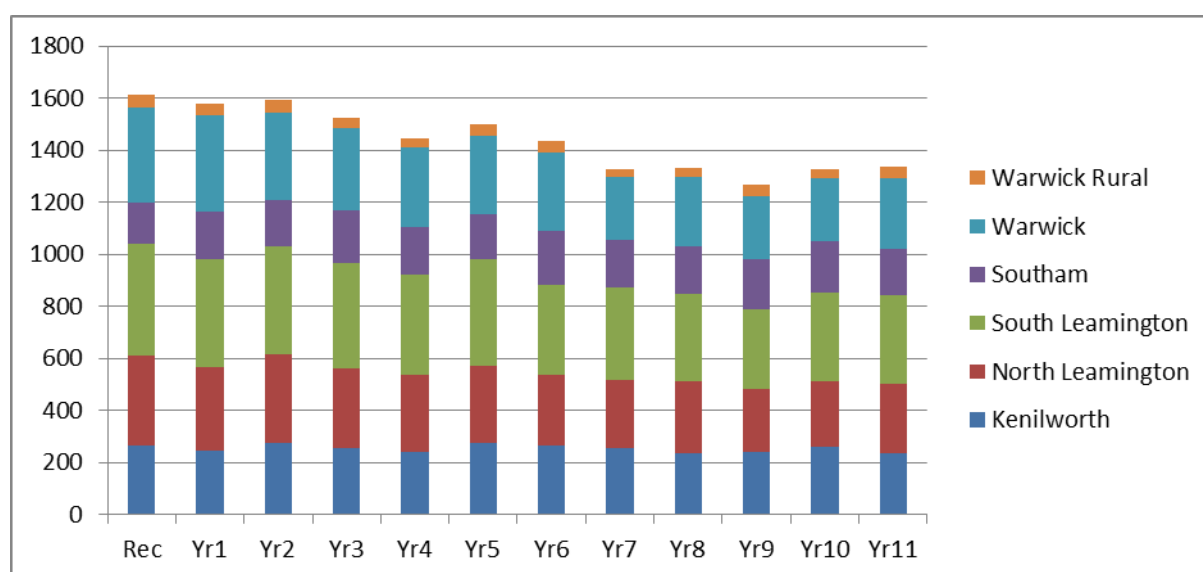
| Area                 | Sep-16    | Sep-17    | Sep-18     |
|----------------------|-----------|-----------|------------|
| Kenilworth           | 6         | 11        | 17         |
| Southam              | 3         | 6         | 9          |
| Warwick / Leamington | 26        | 52        | 78         |
| <b>Central Total</b> | <b>35</b> | <b>69</b> | <b>104</b> |



- **Current Cohort Size**

The number of pupils living in each Central planning area by year group is shown in the table and chart below. It can be seen that the number of pupils in the younger primary school year groups are significantly higher than some current secondary school year groups.

| Year      | Kenilworth | North Leamington | South Leamington | Southam | Warwick | Warwick Rural | Total |
|-----------|------------|------------------|------------------|---------|---------|---------------|-------|
| Reception | 263        | 345              | 432              | 156     | 368     | 48            | 1612  |
| Year 1    | 247        | 320              | 413              | 182     | 371     | 45            | 1578  |
| Year 2    | 274        | 341              | 415              | 177     | 339     | 46            | 1592  |
| Year 3    | 257        | 304              | 406              | 201     | 319     | 37            | 1524  |
| Year 4    | 241        | 294              | 389              | 178     | 309     | 32            | 1443  |
| Year 5    | 277        | 293              | 411              | 174     | 301     | 45            | 1501  |
| Year 6    | 263        | 275              | 346              | 206     | 303     | 40            | 1433  |
| Year 7    | 257        | 260              | 354              | 182     | 242     | 33            | 1328  |
| Year 8    | 237        | 276              | 336              | 179     | 267     | 38            | 1333  |
| Year 9    | 242        | 240              | 306              | 193     | 242     | 42            | 1265  |
| Year 10   | 262        | 249              | 343              | 195     | 245     | 34            | 1328  |
| Year 11   | 234        | 266              | 342              | 178     | 273     | 41            | 1334  |



## Primary Schools

- **Pupil Number Forecasts**

The following table sets out the number of pupils predicted to start primary school in Reception over the next few years along with the likely change in overall pupils numbers in each planning area. An assessment of these figures against the Published Admission Number (PAN) and Net Capacity Assessment is provided.

| Planning Area      | Year   | Reception NOR | PAN  | Surplus Places | Total NOR | Net Capacity | Surplus Places |
|--------------------|--------|---------------|------|----------------|-----------|--------------|----------------|
| Kenilworth         | Sep-16 | 277           | 275  | -1%            | 1980      | 1949         | -2%            |
|                    | Sep-17 | 260           | 275  | 5%             | 2001      | 1949         | -3%            |
|                    | Sep-18 | 234           | 275  | 15%            | 1983      | 1949         | -2%            |
| North Leamington   | Sep-16 | 361           | 375  | 4%             | 2426      | 2625         | 8%             |
|                    | Sep-17 | 359           | 375  | 4%             | 2477      | 2625         | 6%             |
|                    | Sep-18 | 365           | 375  | 3%             | 2518      | 2625         | 4%             |
| South Leamington   | Sep-16 | 458           | 431  | -6%            | 2887      | 2944         | 2%             |
|                    | Sep-17 | 474           | 431  | -10%           | 3117      | 2944         | -6%            |
|                    | Sep-18 | 460           | 431  | -7%            | 3315      | 2944         | -13%           |
| Southam            | Sep-16 | 168           | 242  | 31%            | 1379      | 1697         | 19%            |
|                    | Sep-17 | 196           | 242  | 19%            | 1398      | 1697         | 18%            |
|                    | Sep-18 | 183           | 242  | 24%            | 1369      | 1697         | 19%            |
| Warwick            | Sep-16 | 402           | 410  | 2%             | 2487      | 2525         | 2%             |
|                    | Sep-17 | 385           | 410  | 6%             | 2626      | 2585         | -2%            |
|                    | Sep-18 | 383           | 410  | 7%             | 2734      | 2645         | -3%            |
| Warwick Rural      | Sep-16 | 52            | 50   | -4%            | 297       | 350          | 15%            |
|                    | Sep-17 | 37            | 50   | 26%            | 305       | 350          | 13%            |
|                    | Sep-18 | 33            | 50   | 34%            | 298       | 350          | 15%            |
| Central Area Total | Sep-16 | 1718          | 1783 | 4%             | 11456     | 12090        | 5%             |
|                    | Sep-17 | 1711          | 1783 | 4%             | 11924     | 12150        | 2%             |
|                    | Sep-18 | 1658          | 1783 | 7%             | 12217     | 12210        | 0%             |

- Additional Place Requirements**

As can be seen from the table below, there is a need for an additional permanent two forms of entry in South Leamington in September 2016 – it is anticipated that this will be provided through the opening of a new school. Housing growth is likely to mean that additional classes will need to be opened in existing year groups over the next few years.

| Planning Area      | Sep 16       |                   | Sep 17       |                   | Sep 18       |                   | Total        |                   |
|--------------------|--------------|-------------------|--------------|-------------------|--------------|-------------------|--------------|-------------------|
|                    | Whole New FE | New In-Year Class | Whole New FE | New In-Year Class | Whole New FE | New In-Year Class | Whole New FE | New In-Year Class |
| Kenilworth         | 0            | 4                 | 0            | 0                 | 0            | 1                 | 0            | 5                 |
| North Leamington   | 0            | 0                 | 0            | 0                 | 0            | 0                 | 0            | 0                 |
| South Leamington   | 2            | 3                 | 0            | 0                 | 0            | 3                 | 2            | 6                 |
| Southam            | 0            | 0                 | 0            | 0                 | 0            | 0                 | 0            | 0                 |
| Warwick            | 0            | 0                 | 0            | 1                 | 0            | 1                 | 0            | 2                 |
| Warwick Rural      | 0            | 0                 | 0            | 0                 | 0            | 0                 | 0            | 0                 |
| Central Area Total | 2            | 7                 | 0            | 1                 | 0            | 5                 | 2            | 13                |

## Secondary Schools

- Pupil Number Forecasts**

The following table sets out the number of pupils predicted to start secondary school in Year 7 over the next few years along with the likely change in overall pupils numbers in each planning area. An assessment of these figures against the Published Admission Number (PAN) and Net Capacity Assessment is provided.

| Planning Area        | Year   | Year 7 | PAN  | Surplus | Total | Cap  | Surplus |
|----------------------|--------|--------|------|---------|-------|------|---------|
| Kenilworth           | Sep-16 | 277    | 270  | -3%     | 1841  | 1704 | -8%     |
|                      | Sep-17 | 276    | 270  | -2%     | 1859  | 1704 | -9%     |
|                      | Sep-18 | 289    | 270  | -7%     | 1952  | 1704 | -15%    |
|                      | Sep-19 | 293    | 270  | -9%     | 1960  | 1704 | -15%    |
|                      | Sep-20 | 297    | 270  | -10%    | 1961  | 1704 | -15%    |
| Southam              | Sep-16 | 243    | 210  | -16%    | 1510  | 1224 | -23%    |
|                      | Sep-17 | 245    | 210  | -17%    | 1502  | 1224 | -23%    |
|                      | Sep-18 | 247    | 210  | -18%    | 1528  | 1224 | -25%    |
|                      | Sep-19 | 249    | 210  | -19%    | 1518  | 1224 | -24%    |
|                      | Sep-20 | 251    | 210  | -20%    | 1517  | 1224 | -24%    |
| Warwick & Leamington | Sep-16 | 1007   | 1086 | 7%      | 5378  | 6550 | 18%     |
|                      | Sep-17 | 1019   | 1086 | 6%      | 5770  | 6550 | 12%     |
|                      | Sep-18 | 1082   | 1086 | 0%      | 6098  | 6550 | 7%      |
|                      | Sep-19 | 1165   | 1086 | -7%     | 6466  | 6550 | 1%      |
|                      | Sep-20 | 1189   | 1086 | -9%     | 6817  | 6550 | -4%     |
| Central Area Total   | Sep-16 | 1527   | 1566 | 2%      | 8729  | 9478 | 8%      |
|                      | Sep-17 | 1540   | 1566 | 2%      | 9131  | 9478 | 4%      |
|                      | Sep-18 | 1618   | 1566 | -3%     | 9578  | 9478 | -1%     |
|                      | Sep-19 | 1707   | 1566 | -9%     | 9944  | 9478 | -5%     |
|                      | Sep-20 | 1737   | 1566 | -11%    | 10295 | 9478 | -9%     |

- **Additional Place Requirements**

There is a need to increase the PAN at Southam College to 265 to meet growing demand – effectively adding 2 forms of entry. Otherwise, there is little need for additional capacity in Central secondary schools until after September 2018.

| Planning Area      | Sep 16       |                   | Sep 17       |                   | Sep 18       |                   | Total        |                   |
|--------------------|--------------|-------------------|--------------|-------------------|--------------|-------------------|--------------|-------------------|
|                    | Whole New FE | New In-Year Class | Whole New FE | New In-Year Class | Whole New FE | New In-Year Class | Whole New FE | New In-Year Class |
| Kenilworth         | 0            | 0                 | 0            | 0                 | 0            | 0                 | 0            | 0                 |
| Southam            | 2            | 0                 | 0            | 0                 | 0            | 0                 | 2            | 0                 |
| Warwick & Leam.    | 0            | 0                 | 0            | 0                 | 0            | 0                 | 0            | 0                 |
| Central Area Total | 2            | 0                 | 0            | 0                 | 0            | 0                 | 2            | 0                 |

## Summary

- The annual number of births in Central area has dropped in recent years but there is still a need for additional primary places in some areas in particular to meet the target of maintaining 4% surplus places.
- At primary school level there is a need for an extra permanent 2 forms of entry from September 2016. It is planned to meet this demand by opening a new school within one of the planned new housing developments.

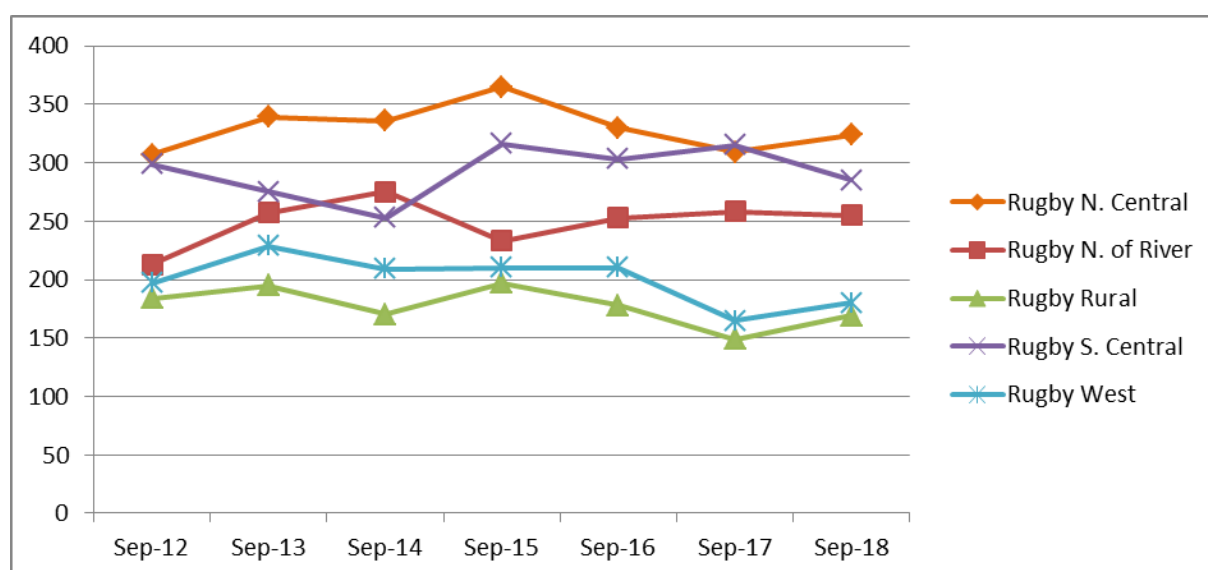
- In addition, the planned new housing developments in the area are predicted to put pressure on existing year groups, particularly in Kenilworth, South Leamington and Warwick. As a result, schools may need to open additional classes in older year groups as the need arises. Approximately 13 of these will be needed over the next three years.
- There is pressure on secondary places in Southam particularly as a result of a growing number of new housing applications. An additional 2 forms of entry is required to meet this.

## Eastern Area Demographics

### • Births

In the East Area (Rugby and the surrounding villages) the annual number of births seems to have peaked in 2010/11 (these children started school in September 2015) with the total number falling by 9% in just 2 years then stabilising. The number of births per planning area is shown in the table and chart below:

| Birth Year                  | 2007/08     | 2008/09     | 2009/10     | 2010/11     | 2011/12     | 2012/13     | 2013/14     |
|-----------------------------|-------------|-------------|-------------|-------------|-------------|-------------|-------------|
| Start School                | Sep-12      | Sep-13      | Sep-14      | Sep-15      | Sep-16      | Sep-17      | Sep-18      |
| Rugby N. Central            | 307         | 339         | 336         | 365         | 330         | 309         | 324         |
| Rugby N. of River           | 213         | 257         | 275         | 233         | 253         | 258         | 255         |
| Rugby Rural                 | 184         | 195         | 170         | 197         | 178         | 149         | 169         |
| Rugby S. Central            | 299         | 275         | 253         | 316         | 303         | 315         | 285         |
| Rugby West                  | 197         | 229         | 209         | 210         | 210         | 165         | 180         |
| <b>East Area Total</b>      | <b>1200</b> | <b>1295</b> | <b>1243</b> | <b>1321</b> | <b>1274</b> | <b>1196</b> | <b>1213</b> |
| Change Since Previous Year  | -           | 8%          | -4%         | 6%          | -4%         | -6%         | 1%          |
| Change Since September 2012 | -           | 8%          | 4%          | 10%         | 6%          | 0%          | 1%          |



- **Housing**

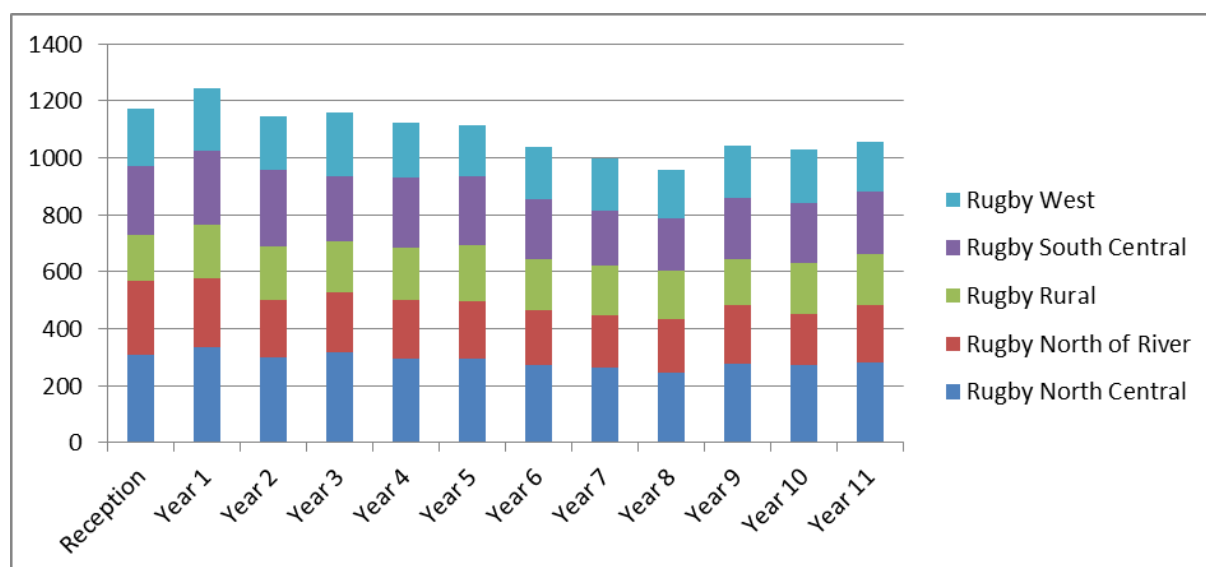
The table below sets out the estimated impact of new housing in terms of additional pupils brought to the area in each year group.

| Area       | Sep-16 | Sep-17 | Sep-18 |
|------------|--------|--------|--------|
| Rugby      | 40     | 71     | 102    |
| East Total | 40     | 71     | 102    |

### Current Cohort Size

The number of pupils living in each East planning area by year group is shown in the table and chart below. It can be seen that the number of pupils in the younger primary school year groups are significantly higher than some current secondary school year groups.

| Year      | Rugby North Central | Rugby North of River | Rugby Rural | Rugby South Central | Rugby West | Total |
|-----------|---------------------|----------------------|-------------|---------------------|------------|-------|
| Reception | 309                 | 258                  | 162         | 242                 | 201        | 1172  |
| Year 1    | 334                 | 243                  | 190         | 256                 | 221        | 1244  |
| Year 2    | 298                 | 204                  | 186         | 270                 | 186        | 1144  |
| Year 3    | 316                 | 212                  | 180         | 226                 | 223        | 1157  |
| Year 4    | 296                 | 207                  | 181         | 246                 | 195        | 1125  |
| Year 5    | 295                 | 200                  | 199         | 241                 | 178        | 1113  |
| Year 6    | 271                 | 193                  | 182         | 208                 | 184        | 1038  |
| Year 7    | 264                 | 183                  | 177         | 190                 | 184        | 998   |
| Year 8    | 245                 | 190                  | 169         | 185                 | 169        | 958   |
| Year 9    | 275                 | 209                  | 159         | 218                 | 183        | 1044  |
| Year 10   | 271                 | 182                  | 177         | 213                 | 185        | 1028  |
| Year 11   | 282                 | 202                  | 179         | 219                 | 174        | 1056  |



## Primary Schools

- Pupil Number Forecasts**

The following table sets out the number of pupils predicted to start primary school in Reception over the next few years along with the likely change in overall pupils numbers in each planning area. An assessment of these figures against the Published Admission Number (PAN) and Net Capacity Assessment is provided.

| Planning Area            | Year   | Reception NOR | PAN  | Surplus Places | Total NOR | Net Capacity | Surplus Places |
|--------------------------|--------|---------------|------|----------------|-----------|--------------|----------------|
| Rugby North Central      | Sep-16 | 304           | 315  | 3%             | 2139      | 2079         | -3%            |
|                          | Sep-17 | 303           | 315  | 4%             | 2210      | 2109         | -5%            |
|                          | Sep-18 | 324           | 315  | -3%            | 2291      | 2139         | -7%            |
| Rugby North of the River | Sep-16 | 225           | 270  | 17%            | 1492      | 1380         | -8%            |
|                          | Sep-17 | 244           | 270  | 10%            | 1644      | 1440         | -14%           |
|                          | Sep-18 | 267           | 270  | 1%             | 1803      | 1500         | -20%           |
| Rugby Rural              | Sep-16 | 252           | 260  | 3%             | 1742      | 1704         | -2%            |
|                          | Sep-17 | 223           | 260  | 14%            | 1743      | 1704         | -2%            |
|                          | Sep-18 | 247           | 260  | 5%             | 1752      | 1704         | -3%            |
| Rugby South Central      | Sep-16 | 274           | 255  | -7%            | 1779      | 1845         | 4%             |
|                          | Sep-17 | 280           | 255  | -10%           | 1845      | 1890         | 2%             |
|                          | Sep-18 | 264           | 255  | -4%            | 1889      | 1935         | 2%             |
| Rugby West               | Sep-16 | 229           | 237  | 3%             | 1574      | 1540         | -2%            |
|                          | Sep-17 | 209           | 237  | 12%            | 1614      | 1570         | -3%            |
|                          | Sep-18 | 222           | 237  | 6%             | 1646      | 1600         | -3%            |
| East Area Total          | Sep-16 | 1284          | 1337 | 4%             | 8726      | 8548         | -2%            |
|                          | Sep-17 | 1259          | 1337 | 6%             | 9056      | 8713         | -4%            |
|                          | Sep-18 | 1324          | 1337 | 1%             | 9381      | 8878         | -6%            |

- Additional Place Requirements**

As can be seen from the table below, there is a need for a mixture of additional permanent forms of entry and in-year 'bulge classes' over the next few years. The need for an additional 3 forms of entry on a permanent basis has been identified with two new primary schools proposed to open in September 2017. It is proposed to add an additional form of entry at Long Lawford from September 2016. As many as 15 new classes may need to be opened to cope with families moving to new homes with school-age children.

| Planning Area      | Sep 16       |                   | Sep 17       |                   | Sep 18       |                   | Total        |                   |
|--------------------|--------------|-------------------|--------------|-------------------|--------------|-------------------|--------------|-------------------|
|                    | Whole New FE | New In-Year Class | Whole New FE | New In-Year Class | Whole New FE | New In-Year Class | Whole New FE | New In-Year Class |
| Rugby N. Central   | 0            | 5                 | 2            | 0                 | 0            | 0                 | 2            | 5                 |
| Rugby N. the River | 0            | 6                 | 1            | 0                 | 0            | 1                 | 1            | 7                 |
| Rugby Rural        | 0            | 0                 | 0            | 0                 | 0            | 0                 | 0            | 0                 |
| Rugby S. Central   | 1            | 0                 | 0            | 0                 | 0            | 0                 | 0            | 0                 |
| Rugby West         | 0            | 1                 | 0            | 1                 | 0            | 1                 | 0            | 3                 |
| East Area Total    | 1            | 12                | 3            | 1                 | 0            | 2                 | 4            | 15                |

## Secondary Schools

- Pupil Number Forecasts**

The following table sets out the number of pupils predicted to start secondary school in Year 7 over the next few years along with the likely change in overall pupils numbers in each planning area. An assessment of these figures against the Published Admission Number (PAN) and Net Capacity Assessment is provided.

| Planning Area          | Year   | Year 7 | PAN  | Surplus | Total | Cap  | Surplus |
|------------------------|--------|--------|------|---------|-------|------|---------|
| Rugby North of Railway | Sep-16 | 249    | 220  | -13%    | 1203  | 1100 | -9%     |
|                        | Sep-17 | 284    | 220  | -29%    | 1313  | 1100 | -19%    |
|                        | Sep-18 | 310    | 220  | -41%    | 1445  | 1100 | -31%    |
|                        | Sep-19 | 319    | 220  | -45%    | 1495  | 1100 | -36%    |
|                        | Sep-20 | 357    | 220  | -62%    | 1606  | 1100 | -46%    |
| Rugby South of Railway | Sep-16 | 1187   | 1108 | -7%     | 5557  | 5702 | 3%      |
|                        | Sep-17 | 1239   | 1108 | -12%    | 5841  | 5702 | -2%     |
|                        | Sep-18 | 1301   | 1108 | -17%    | 6172  | 5702 | -8%     |
|                        | Sep-19 | 1299   | 1108 | -17%    | 6312  | 5702 | -11%    |
|                        | Sep-20 | 1390   | 1108 | -25%    | 6433  | 5702 | -13%    |
| East Area Total        | Sep-16 | 1436   | 1328 | -8%     | 6760  | 6802 | 1%      |
|                        | Sep-17 | 1523   | 1328 | -15%    | 7154  | 6802 | -5%     |
|                        | Sep-18 | 1611   | 1328 | -21%    | 7617  | 6802 | -12%    |
|                        | Sep-19 | 1618   | 1328 | -22%    | 7807  | 6802 | -15%    |
|                        | Sep-20 | 1747   | 1328 | -32%    | 8039  | 6802 | -18%    |

- Additional Place Requirements**

Larger primary school cohorts are starting to transfer to Rugby secondary schools and as a result there is a need for a significant increase in capacity from September 2016 onwards. Over the next three years the need for an additional eight permanent forms of entry has been identified.

| Planning Area   | Sep 16       |                   | Sep 17       |                   | Sep 18       |                   | Total        |                   |
|-----------------|--------------|-------------------|--------------|-------------------|--------------|-------------------|--------------|-------------------|
|                 | Whole New FE | New In-Year Class | Whole New FE | New In-Year Class | Whole New FE | New In-Year Class | Whole New FE | New In-Year Class |
| Rugby (All)     | 4            | 0                 | 2            | 0                 | 2            | 0                 | 8            | 0                 |
| East Area Total | 4            | 0                 | 2            | 0                 | 2            | 0                 | 8            | 0                 |

## Summary

- The annual number of births in East area has dropped in recent years but there is still a need for additional primary places in some areas in particular to meet the target of maintaining 4% surplus places as significant numbers of new houses are built.
- At primary school level there is a need for an extra three permanent forms of entry from September 2017. It is planned to meet this demand by opening two new primary schools – one on the 'Gateway' site and one on the Radio Mast site. Further new schools will be required to serve the Mast site over time.

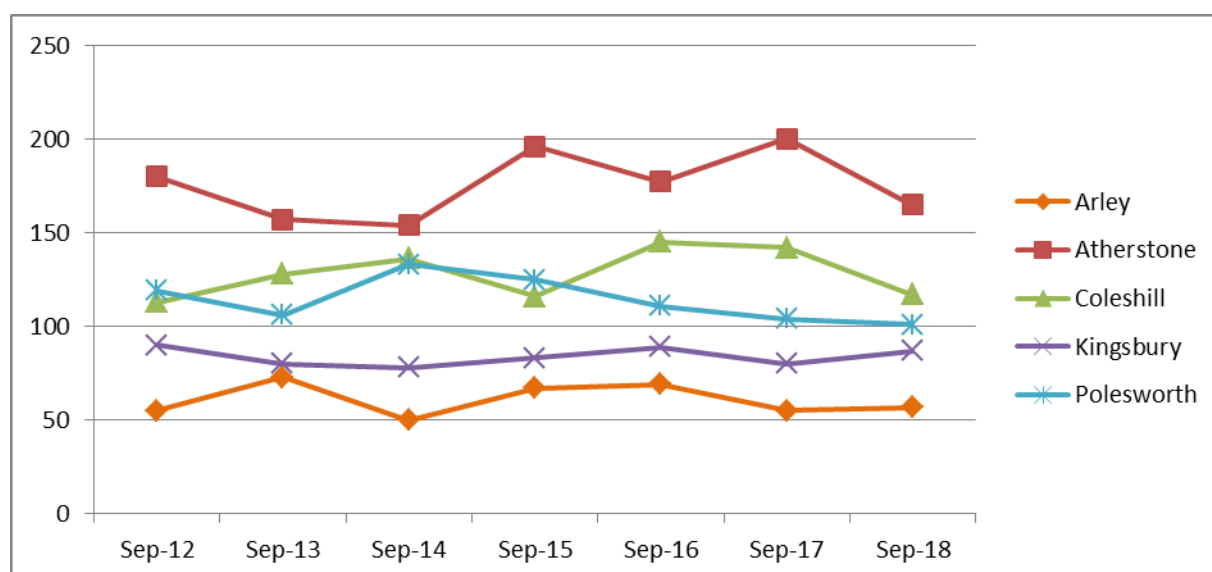
- In addition, the planned new housing developments in the area are predicted to put pressure on existing year groups, particularly in North and Central parts of the town. As a result, schools may need to open additional classes in older year groups as the need arises. Approximately 15 of these classes will be needed over the next three years.
- There is growing pressure on secondary school places in Rugby that will only be exacerbated by the impact of new housing developments. An additional eight forms of entry will be required: the LA is supporting an application for a new secondary Free School in the town, which will go some way to meeting this additional demand.

## Northern Area Demographics

### • Births

In the North Area the annual number of births seems to have peaked in 2011/12 (these children start school in September 2016) with the total number falling by 11% since then. The number of births per planning area is shown in the table and chart below:

| Birth Year                  | 2007/08    | 2008/09    | 2009/10    | 2010/11    | 2011/12    | 2012/13    | 2013/14    |
|-----------------------------|------------|------------|------------|------------|------------|------------|------------|
| Start School                | Sep-12     | Sep-13     | Sep-14     | Sep-15     | Sep-16     | Sep-17     | Sep-18     |
| Arley                       | 55         | 73         | 50         | 67         | 69         | 55         | 57         |
| Atherstone                  | 180        | 157        | 154        | 196        | 177        | 200        | 165        |
| Coleshill                   | 113        | 128        | 136        | 116        | 145        | 142        | 117        |
| Kingsbury                   | 90         | 80         | 78         | 83         | 89         | 80         | 87         |
| Polesworth                  | 119        | 106        | 133        | 125        | 111        | 104        | 101        |
| <b>North Area Total</b>     | <b>557</b> | <b>544</b> | <b>551</b> | <b>587</b> | <b>591</b> | <b>581</b> | <b>527</b> |
| Change Since Previous Year  | -          | -2%        | 1%         | 7%         | 1%         | -2%        | -9%        |
| Change Since September 2012 | -          | -2%        | -1%        | 5%         | 6%         | 4%         | -5%        |





- **Housing**

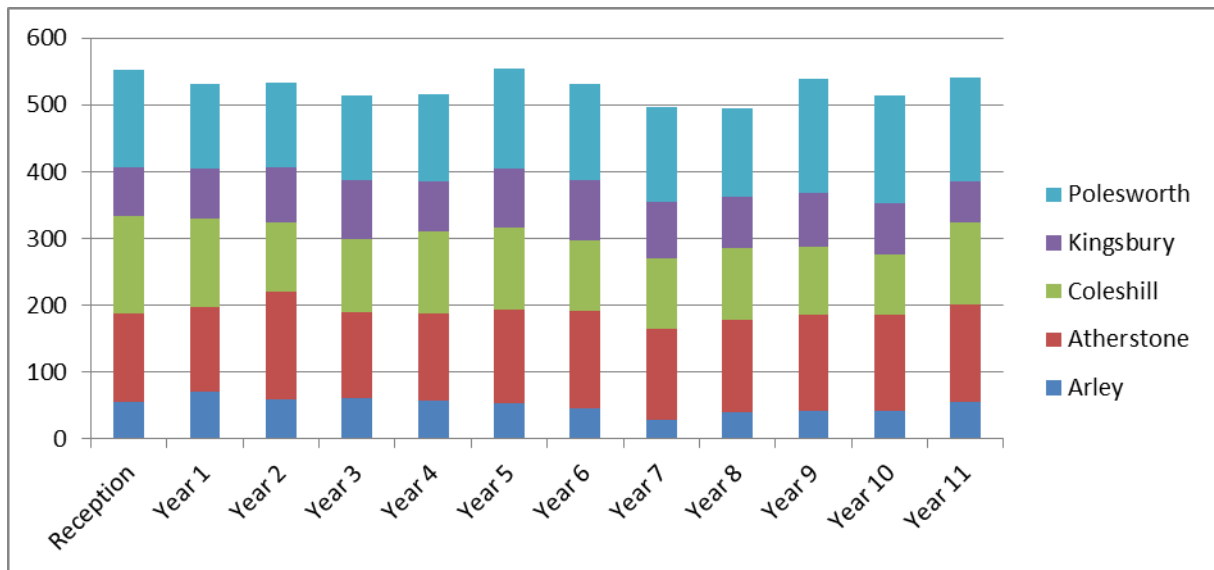
The table below sets out the estimated impact of new housing in terms of additional pupils brought to the area in each year group.

| Area        | Sep-16 | Sep-17 | Sep-18 |
|-------------|--------|--------|--------|
| Arley       | 1      | 1      | 2      |
| Atherstone  | 4      | 9      | 13     |
| Coleshill   | 1      | 2      | 3      |
| Kingsbury   | 1      | 1      | 2      |
| Polesworth  | 4      | 8      | 13     |
| North Total | 11     | 21     | 33     |

- **Current Cohort Size**

The number of pupils living in each North Warwickshire planning area by year group is shown in the table and chart below. It can be seen that the number of pupils in the younger primary school year groups are significantly higher than some current secondary school year groups.

| Year      | Arley | Atherstone | Coleshill | Kingsbury | Polesworth | Grand Total |
|-----------|-------|------------|-----------|-----------|------------|-------------|
| Reception | 56    | 131        | 146       | 74        | 145        | 552         |
| Year 1    | 70    | 128        | 132       | 74        | 127        | 531         |
| Year 2    | 59    | 161        | 105       | 81        | 127        | 533         |
| Year 3    | 61    | 128        | 111       | 88        | 125        | 513         |
| Year 4    | 57    | 131        | 122       | 75        | 131        | 516         |
| Year 5    | 53    | 141        | 122       | 89        | 150        | 555         |
| Year 6    | 45    | 147        | 106       | 90        | 143        | 531         |
| Year 7    | 29    | 135        | 106       | 84        | 142        | 496         |
| Year 8    | 41    | 137        | 107       | 78        | 132        | 495         |
| Year 9    | 43    | 143        | 102       | 81        | 170        | 539         |
| Year 10   | 43    | 143        | 90        | 77        | 160        | 513         |
| Year 11   | 55    | 147        | 123       | 60        | 155        | 540         |



## Primary Schools

- Pupil Number Forecasts**

The following table sets out the number of pupils predicted to start primary school in Reception over the next few years along with the likely change in overall pupils numbers in each planning area. An assessment of these figures against the Published Admission Number (PAN) and Net Capacity Assessment is provided.

| Planning Area    | Year   | Reception NOR | PAN | Surplus Places | Total NOR | Net Capacity | Surplus Places |
|------------------|--------|---------------|-----|----------------|-----------|--------------|----------------|
| Arley            | Sep-16 | 64            | 64  | 0%             | 368       | 448          | 18%            |
|                  | Sep-17 | 53            | 64  | 17%            | 378       | 448          | 16%            |
|                  | Sep-18 | 55            | 64  | 14%            | 395       | 448          | 12%            |
| Atherstone       | Sep-16 | 159           | 190 | 16%            | 1009      | 1317         | 23%            |
|                  | Sep-17 | 180           | 190 | 5%             | 1085      | 1317         | 18%            |
|                  | Sep-18 | 159           | 190 | 16%            | 1137      | 1317         | 14%            |
| Coleshill        | Sep-16 | 183           | 179 | -2%            | 1252      | 1323         | 5%             |
|                  | Sep-17 | 182           | 179 | -2%            | 1260      | 1323         | 5%             |
|                  | Sep-18 | 174           | 179 | 3%             | 1266      | 1323         | 4%             |
| Kingsbury        | Sep-16 | 84            | 99  | 15%            | 584       | 665          | 12%            |
|                  | Sep-17 | 80            | 99  | 19%            | 593       | 665          | 11%            |
|                  | Sep-18 | 83            | 99  | 16%            | 584       | 665          | 12%            |
| Polesworth       | Sep-16 | 162           | 189 | 14%            | 1154      | 1319         | 13%            |
|                  | Sep-17 | 156           | 189 | 17%            | 1175      | 1319         | 11%            |
|                  | Sep-18 | 153           | 189 | 19%            | 1180      | 1319         | 11%            |
| North Area Total | Sep-16 | 652           | 721 | 10%            | 4367      | 5072         | 14%            |
|                  | Sep-17 | 651           | 721 | 10%            | 4491      | 5072         | 11%            |
|                  | Sep-18 | 624           | 721 | 13%            | 4562      | 5072         | 10%            |

- **Additional Place Requirements**

As can be seen from the table below, there is no identified need for additional primary school places in North Warwickshire up to September 2018. Pupil number forecasts indicate that even with the impact of new housing there will be sufficient places over this planning period. Any pressure on places is likely to come from families looking to secure places from outside of Warwickshire.

| Planning Area | Sep 16       |                   | Sep 17       |                   | Sep 18       |                   | Total        |                   |
|---------------|--------------|-------------------|--------------|-------------------|--------------|-------------------|--------------|-------------------|
|               | Whole New FE | New In-Year Class | Whole New FE | New In-Year Class | Whole New FE | New In-Year Class | Whole New FE | New In-Year Class |
| Arley         | 0            | 0                 | 0            | 0                 | 0            | 0                 | 0            | 0                 |
| Atherstone    | 0            | 0                 | 0            | 0                 | 0            | 0                 | 0            | 0                 |
| Coleshill     | 0            | 0                 | 0            | 0                 | 0            | 0                 | 0            | 0                 |
| Kingsbury     | 0            | 0                 | 0            | 0                 | 0            | 0                 | 0            | 0                 |
| Polesworth    | 0            | 0                 | 0            | 0                 | 0            | 0                 | 0            | 0                 |
| North Total   | 0            | 0                 | 0            | 0                 | 0            | 0                 | 0            | 0                 |

### Secondary Schools

- **Pupil Number Forecasts**

The following table sets out the number of pupils predicted to start secondary school in Year 7 over the next few years along with the likely change in overall pupils numbers in each planning area. An assessment of these figures against the Published Admission Number (PAN) and Net Capacity Assessment is provided.

| Planning Area    | Year   | Year 7 | PAN | Surplus | Total | Cap  | Surplus |
|------------------|--------|--------|-----|---------|-------|------|---------|
| North Warks      | Sep-16 | 631    | 693 | 9%      | 3477  | 3952 | 12%     |
|                  | Sep-17 | 635    | 693 | 8%      | 3616  | 3952 | 9%      |
|                  | Sep-18 | 623    | 693 | 10%     | 3687  | 3952 | 7%      |
|                  | Sep-19 | 649    | 693 | 6%      | 3709  | 3952 | 6%      |
|                  | Sep-20 | 668    | 693 | 4%      | 3774  | 3952 | 5%      |
| North Area Total | Sep-16 | 631    | 693 | 9%      | 3477  | 3952 | 12%     |
|                  | Sep-17 | 635    | 693 | 8%      | 3616  | 3952 | 9%      |
|                  | Sep-18 | 623    | 693 | 10%     | 3687  | 3952 | 7%      |
|                  | Sep-19 | 649    | 693 | 6%      | 3709  | 3952 | 6%      |
|                  | Sep-20 | 668    | 693 | 4%      | 3774  | 3952 | 5%      |

- **Additional Place Requirements**

As with the North area primary schools, there is no identified need for additional secondary school places up to September 2018. Whilst pupil numbers are likely to grow, there is currently sufficient capacity within the area's school to cope. Longer term it is likely that a small amount of additional capacity will be required.

| Planning Area    | Sep 16       |                   | Sep 17       |                   | Sep 18       |                   | Total        |                   |
|------------------|--------------|-------------------|--------------|-------------------|--------------|-------------------|--------------|-------------------|
|                  | Whole New FE | New In-Year Class | Whole New FE | New In-Year Class | Whole New FE | New In-Year Class | Whole New FE | New In-Year Class |
| North Warks      | 0            | 0                 | 0            | 0                 | 0            | 0                 | 0            | 0                 |
| North Area Total | 0            | 0                 | 0            | 0                 | 0            | 0                 | 0            | 0                 |

## Summary

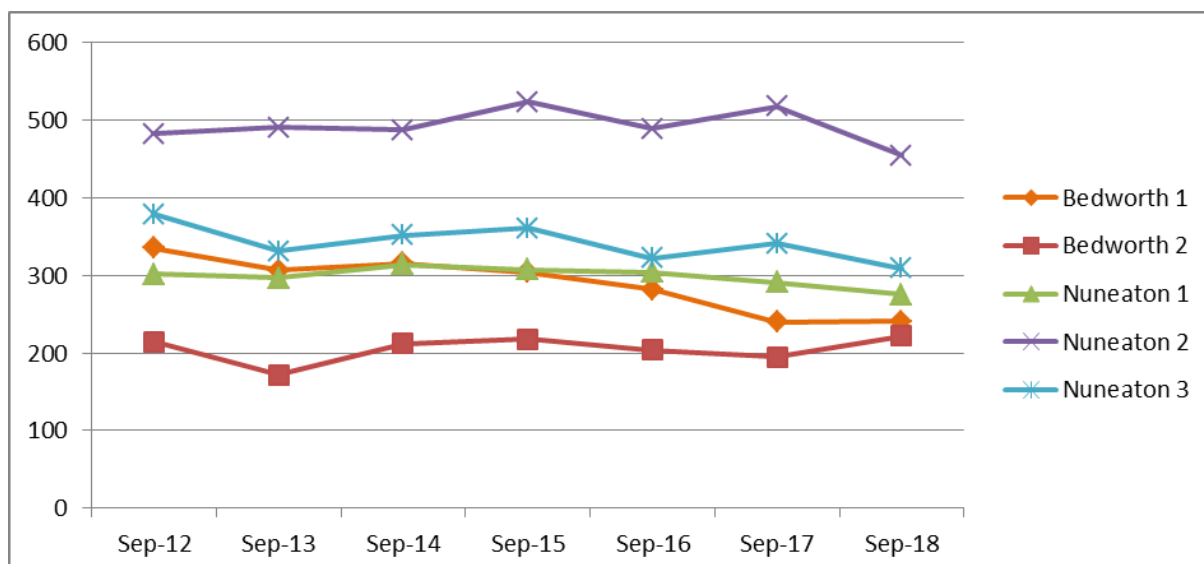
- The annual number of births in the North area has dropped in recent years and there is no need for additional primary school places to be provided.
- There is a similar situation at secondary school level where despite pupil numbers beginning to increase, there is sufficient capacity within the existing school estate.

## Nuneaton and Bedworth Area Demographics

### • Births

In the Nuneaton and Bedworth Area the annual number of births seems to have peaked in 2010/11 (these children started school in September 2015) with the total number falling by over 12% since then. The number of births per planning area is shown in the table and chart below:

| Birth Year                  | 2007/08 | 2008/09 | 2009/10 | 2010/11 | 2011/12 | 2012/13 | 2013/14 |
|-----------------------------|---------|---------|---------|---------|---------|---------|---------|
| Start School                | Sep-12  | Sep-13  | Sep-14  | Sep-15  | Sep-16  | Sep-17  | Sep-18  |
| Bedworth 1                  | 335     | 306     | 315     | 304     | 282     | 240     | 241     |
| Bedworth 2                  | 214     | 172     | 212     | 218     | 204     | 195     | 222     |
| Nuneaton 1                  | 301     | 296     | 314     | 307     | 304     | 291     | 275     |
| Nuneaton 2                  | 482     | 490     | 487     | 523     | 488     | 517     | 454     |
| Nuneaton 3                  | 378     | 331     | 351     | 360     | 322     | 341     | 309     |
| North Area Total            | 1710    | 1595    | 1679    | 1712    | 1600    | 1584    | 1501    |
| Change Since Previous Year  | -       | -7%     | 5%      | 2%      | -7%     | -1%     | -5%     |
| Change Since September 2012 | -       | -7%     | -2%     | 0%      | -6%     | -7%     | -12%    |



- Housing**

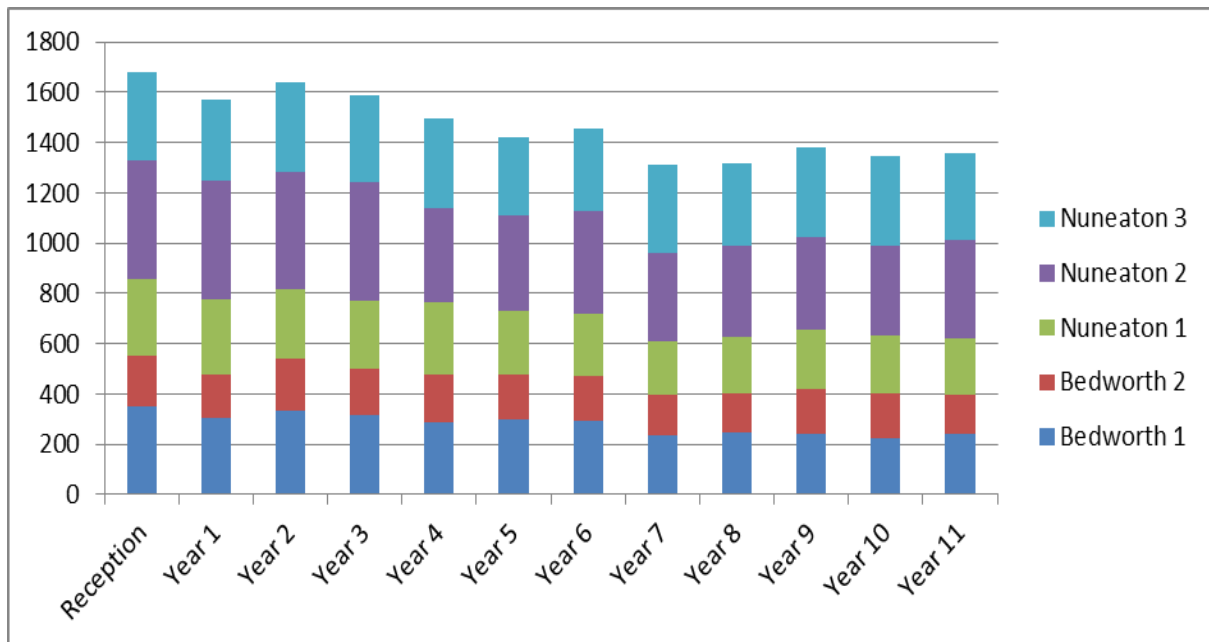
The table below sets out the estimated impact of new housing in terms of additional pupils brought to the area in each year group.

| Area                      | Sep-16 | Sep-17 | Sep-18 |
|---------------------------|--------|--------|--------|
| Bedworth                  | 2      | 3      | 5      |
| Nuneaton                  | 20     | 40     | 59     |
| Nuneaton & Bedworth Total | 22     | 43     | 64     |

- Current Cohort Size**

The number of pupils living in each Nuneaton & Bedworth planning area by year group is shown in the table and chart below. It can be seen that the number of pupils in the younger primary school year groups are significantly higher than some current secondary school year groups.

| Year      | Bedworth 1 | Bedworth 2 | Nuneaton 1 | Nuneaton 2 | Nuneaton 3 | Total |
|-----------|------------|------------|------------|------------|------------|-------|
| Reception | 352        | 201        | 306        | 468        | 353        | 1680  |
| Year 1    | 306        | 172        | 301        | 471        | 318        | 1568  |
| Year 2    | 335        | 204        | 279        | 464        | 358        | 1640  |
| Year 3    | 315        | 186        | 267        | 473        | 349        | 1590  |
| Year 4    | 289        | 188        | 288        | 375        | 357        | 1497  |
| Year 5    | 300        | 176        | 255        | 377        | 315        | 1423  |
| Year 6    | 294        | 179        | 247        | 408        | 326        | 1454  |
| Year 7    | 237        | 160        | 215        | 347        | 352        | 1311  |
| Year 8    | 249        | 152        | 228        | 363        | 323        | 1315  |
| Year 9    | 241        | 177        | 238        | 368        | 354        | 1378  |
| Year 10   | 223        | 179        | 233        | 352        | 361        | 1348  |
| Year 11   | 239        | 156        | 227        | 392        | 342        | 1356  |



## Primary Schools

- Pupil Number Forecasts**

The following table sets out the number of pupils predicted to start primary school in Reception over the next few years along with the likely change in overall pupils numbers in each planning area. An assessment of these figures against the Published Admission Number (PAN) and Net Capacity Assessment is provided.

| Planning Area             | Year   | Reception NOR | PAN  | Surplus Places | Total NOR | Net Capacity | Surplus Places |
|---------------------------|--------|---------------|------|----------------|-----------|--------------|----------------|
| Bedworth 1                | Sep-16 | 296           | 315  | 6%             | 2015      | 2115         | 5%             |
|                           | Sep-17 | 262           | 315  | 17%            | 1969      | 2115         | 7%             |
|                           | Sep-18 | 240           | 315  | 24%            | 1919      | 2115         | 9%             |
| Bedworth 2                | Sep-16 | 260           | 255  | -2%            | 1699      | 1771         | 4%             |
|                           | Sep-17 | 246           | 255  | 4%             | 1737      | 1801         | 4%             |
|                           | Sep-18 | 266           | 255  | -4%            | 1786      | 1831         | 2%             |
| Nuneaton 1                | Sep-16 | 272           | 275  | 1%             | 1885      | 2002         | 6%             |
|                           | Sep-17 | 275           | 275  | 0%             | 1952      | 2002         | 2%             |
|                           | Sep-18 | 258           | 275  | 6%             | 1936      | 2002         | 3%             |
| Nuneaton 2                | Sep-16 | 380           | 390  | 3%             | 2576      | 2895         | 11%            |
|                           | Sep-17 | 414           | 390  | -6%            | 2711      | 2895         | 6%             |
|                           | Sep-18 | 357           | 390  | 8%             | 2706      | 2895         | 7%             |
| Nuneaton 3                | Sep-16 | 450           | 460  | 2%             | 3263      | 3212         | -2%            |
|                           | Sep-17 | 460           | 460  | 0%             | 3304      | 3212         | -3%            |
|                           | Sep-18 | 452           | 460  | 2%             | 3373      | 3212         | -5%            |
| Nuneaton & Bedworth Total | Sep-16 | 1658          | 1695 | 2%             | 11438     | 11995        | 5%             |
|                           | Sep-17 | 1657          | 1695 | 2%             | 11673     | 12025        | 3%             |
|                           | Sep-18 | 1573          | 1695 | 7%             | 11720     | 12055        | 3%             |

- **Additional Place Requirements**

As can be seen from the table below, there is a need for a mixture of additional permanent forms of entry and in-year 'bulge classes' over the next few years. In terms of permanent expansions, the need for an additional form of entry in Nuneaton has been identified for September 2017 and the need for an additional half form of entry identified for Bedworth for September 2016. Approximately 10 new classes may need to be opened to cope with families moving to new homes with school-age children up to September 2018.

| Planning Area               | Sep 16       |                   | Sep 17       |                   | Sep 18       |                   | Total        |                   |
|-----------------------------|--------------|-------------------|--------------|-------------------|--------------|-------------------|--------------|-------------------|
|                             | Whole New FE | New In-Year Class | Whole New FE | New In-Year Class | Whole New FE | New In-Year Class | Whole New FE | New In-Year Class |
| Bedworth 1                  | 0            | 0                 | 0            | 0                 | 0            | 0                 | 0            | 0                 |
| Bedworth 2                  | 0.5          | 0                 | 0            | 0                 | 0            | 1                 | 0.5          | 1                 |
| Nuneaton 1                  | 0            | 2                 | 0            | 2                 | 0            | 0                 | 0            | 4                 |
| Nuneaton 2                  | 0            | 0                 | 1            | 0                 | 0            | 0                 | 1            | 0                 |
| Nuneaton 3                  | 0            | 1                 | 0            | 1                 | 0            | 3                 | 0            | 5                 |
| <b>Nun &amp; Bed. Total</b> | <b>0.5</b>   | <b>3</b>          | <b>1</b>     | <b>3</b>          | <b>0</b>     | <b>4</b>          | <b>1.5</b>   | <b>10</b>         |

## Secondary Schools

- **Pupil Number Forecasts**

The following table sets out the number of pupils predicted to start secondary school in Year 7 over the next few years along with the likely change in overall pupils numbers in each planning area. An assessment of these figures against the Published Admission Number (PAN) and Net Capacity Assessment is provided.

| Planning Area             | Year   | Year 7 | PAN  | Surplus | Total | Cap  | Surplus |
|---------------------------|--------|--------|------|---------|-------|------|---------|
| Bedworth                  | Sep-16 | 380    | 470  | 19%     | 2068  | 2443 | 15%     |
|                           | Sep-17 | 390    | 470  | 17%     | 2091  | 2443 | 14%     |
|                           | Sep-18 | 397    | 470  | 16%     | 2141  | 2443 | 12%     |
|                           | Sep-19 | 428    | 470  | 9%      | 2234  | 2443 | 9%      |
|                           | Sep-20 | 389    | 470  | 17%     | 2250  | 2443 | 8%      |
| Hartshill                 | Sep-16 | 210    | 210  | 0%      | 1046  | 1050 | 0%      |
|                           | Sep-17 | 211    | 210  | 0%      | 1051  | 1050 | 0%      |
|                           | Sep-18 | 258    | 210  | -23%    | 1115  | 1050 | -6%     |
|                           | Sep-19 | 268    | 210  | -28%    | 1192  | 1050 | -14%    |
|                           | Sep-20 | 288    | 210  | -37%    | 1276  | 1050 | -22%    |
| Nuneaton                  | Sep-16 | 865    | 949  | 9%      | 4518  | 5370 | 16%     |
|                           | Sep-17 | 949    | 949  | 0%      | 4670  | 5370 | 13%     |
|                           | Sep-18 | 990    | 949  | -4%     | 4891  | 5370 | 9%      |
|                           | Sep-19 | 1016   | 949  | -7%     | 5131  | 5370 | 4%      |
|                           | Sep-20 | 993    | 949  | -5%     | 5271  | 5370 | 2%      |
| Nuneaton & Bedworth Total | Sep-16 | 1455   | 1629 | 11%     | 7632  | 8863 | 14%     |
|                           | Sep-17 | 1550   | 1629 | 5%      | 7812  | 8863 | 12%     |
|                           | Sep-18 | 1645   | 1629 | -1%     | 8147  | 8863 | 8%      |
|                           | Sep-19 | 1712   | 1629 | -5%     | 8557  | 8863 | 3%      |
|                           | Sep-20 | 1670   | 1629 | -3%     | 8797  | 8863 | 1%      |

- **Additional Place Requirements**

Larger primary school cohorts are starting to transfer to Nuneaton and Bedworth secondary schools and as a result there is a need for a significant increase in capacity from September 2017 onwards starting with an additional form of entry in Hartshill. Over the next three years the need for an additional four permanent forms of entry has been identified.

| Planning Area    | Sep 16       |                   | Sep 17       |                   | Sep 18       |                   | Total        |                   |
|------------------|--------------|-------------------|--------------|-------------------|--------------|-------------------|--------------|-------------------|
|                  | Whole New FE | New In-Year Class | Whole New FE | New In-Year Class | Whole New FE | New In-Year Class | Whole New FE | New In-Year Class |
| Bedworth         | 0            | 0                 | 0            | 0                 | 0            | 0                 | 0            | 0                 |
| Hartshill        | 0            | 0                 | 1            | 0                 | 0            | 0                 | 1            | 0                 |
| Nuneaton         | 0            | 0                 | 0            | 0                 | 3            | 0                 | 3            | 0                 |
| Nun & Bed. Total | 0            | 0                 | 1            | 0                 | 3            | 0                 | 4            | 0                 |

## Summary

- The annual number of births in Nuneaton and Bedworth area has dropped in recent years but there is still a need for additional primary places in some areas in particular to meet the target of maintaining 4% surplus places as significant numbers of new houses are built.
- At primary school level there is a need for an extra permanent form of entry from September 2017 in Nuneaton and a half form of entry in Bedworth from September 2016 onwards.
- In addition, the planned new housing developments in the area are predicted to put pressure on existing year groups, particularly in Nuneaton. As a result, schools may need to open additional classes in older year groups as the need arises. Approximately 10 of these classes will be needed over the next three years.
- There is growing pressure on secondary school places in this area, particularly in Nuneaton, that will only be exacerbated by the impact of new housing developments. An additional four forms of entry is expected to be needed by September 2018.

## Southern Area Demographics

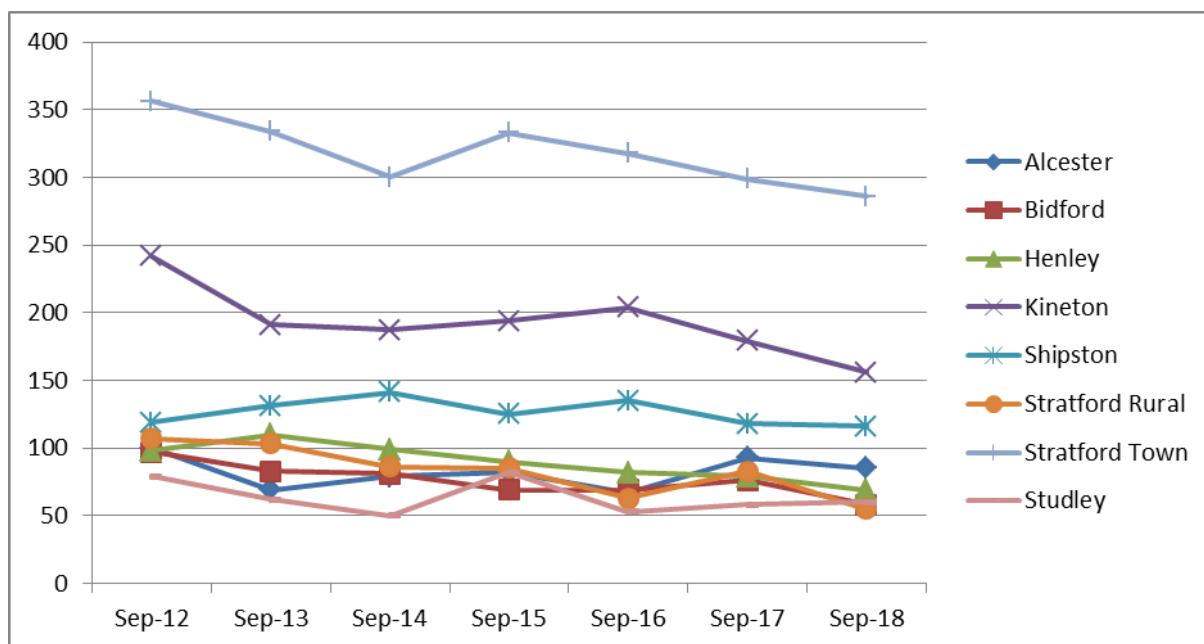
- **Births**

In the South Area the annual number of births seems to have peaked in 2010/11 (these children started school in September 2015) with the total number falling by 17% since that time. The number of births per planning area is shown in the table and chart below:

| Birth Year   | 2007/08 | 2008/09 | 2009/10 | 2010/11 | 2011/12 | 2012/13 | 2013/14 |
|--------------|---------|---------|---------|---------|---------|---------|---------|
| Start School | Sep-12  | Sep-13  | Sep-14  | Sep-15  | Sep-16  | Sep-17  | Sep-18  |
| Alcester     | 100     | 69      | 79      | 82      | 67      | 93      | 85      |
| Bidford      | 97      | 83      | 81      | 69      | 69      | 76      | 58      |



|                             |             |             |             |             |            |            |            |
|-----------------------------|-------------|-------------|-------------|-------------|------------|------------|------------|
| Henley                      | 98          | 110         | 99          | 90          | 82         | 79         | 69         |
| Kineton                     | 242         | 191         | 187         | 194         | 204        | 179        | 156        |
| Shipston                    | 119         | 131         | 141         | 125         | 135        | 118        | 116        |
| Stratford Rural             | 107         | 103         | 86          | 85          | 63         | 83         | 55         |
| Stratford Town              | 356         | 334         | 300         | 333         | 318        | 299        | 286        |
| Studley                     | 79          | 62          | 50          | 82          | 53         | 58         | 60         |
| <b>South Area Total</b>     | <b>1198</b> | <b>1083</b> | <b>1023</b> | <b>1060</b> | <b>991</b> | <b>985</b> | <b>885</b> |
| Change Since Previous Year  | -           | -10%        | -6%         | 4%          | -7%        | -1%        | -10%       |
| Change Since September 2012 | -           | -10%        | -15%        | -12%        | -17%       | -18%       | -26%       |



## • Housing

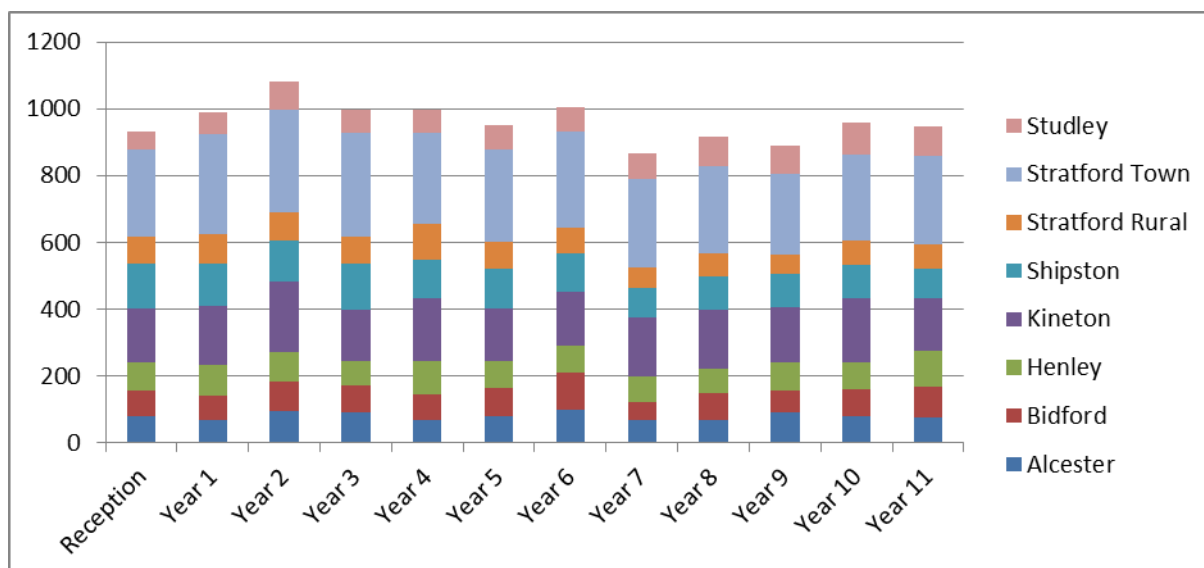
The table below sets out the estimated impact of new housing in terms of additional pupils brought to the area in each year group.

| Area                         | Sep-16    | Sep-17    | Sep-18    |
|------------------------------|-----------|-----------|-----------|
| Alcester / Bidford / Studley | 7         | 14        | 22        |
| Henley                       | 1         | 2         | 3         |
| Kineton                      | 9         | 18        | 27        |
| Shipston                     | 3         | 6         | 10        |
| Stratford                    | 12        | 24        | 37        |
| <b>South Total</b>           | <b>32</b> | <b>64</b> | <b>99</b> |

## • Current Cohort Size

The number of pupils living in each South planning area by year group is shown in the table and chart below. It can be seen that the number of pupils in the younger primary school year groups are significantly higher than some current secondary school year groups.

| Year      | Alcester | Bidford | Henley | Kineton | Shipston | Stratford Rural | Stratford Town | Studley | Total |
|-----------|----------|---------|--------|---------|----------|-----------------|----------------|---------|-------|
| Reception | 82       | 75      | 83     | 162     | 136      | 78              | 261            | 54      | 931   |
| Year 1    | 70       | 73      | 92     | 175     | 125      | 89              | 300            | 67      | 991   |
| Year 2    | 97       | 86      | 89     | 212     | 120      | 85              | 309            | 85      | 1083  |
| Year 3    | 93       | 78      | 73     | 155     | 136      | 83              | 312            | 66      | 996   |
| Year 4    | 69       | 78      | 97     | 189     | 116      | 108             | 271            | 68      | 996   |
| Year 5    | 82       | 82      | 82     | 157     | 118      | 81              | 276            | 72      | 950   |
| Year 6    | 100      | 110     | 82     | 160     | 114      | 80              | 287            | 72      | 1005  |
| Year 7    | 69       | 55      | 76     | 174     | 90       | 61              | 266            | 76      | 867   |
| Year 8    | 68       | 80      | 76     | 176     | 100      | 66              | 264            | 86      | 916   |
| Year 9    | 91       | 65      | 84     | 165     | 102      | 56              | 242            | 83      | 888   |
| Year 10   | 81       | 81      | 80     | 191     | 101      | 72              | 258            | 94      | 958   |
| Year 11   | 78       | 90      | 107    | 158     | 88       | 73              | 265            | 87      | 946   |



## Primary Schools

- **Pupil Number Forecasts**

The following table sets out the number of pupils predicted to start primary school in Reception over the next few years along with the likely change in overall pupils numbers in each planning area. An assessment of these figures against the Published Admission Number (PAN) and Net Capacity Assessment is provided.

| Planning Area | Year   | Reception NOR | PAN | Surplus Places | Total NOR | Net Capacity | Surplus Places |
|---------------|--------|---------------|-----|----------------|-----------|--------------|----------------|
| Alcester      | Sep-16 | 100           | 126 | 21%            | 801       | 882          | 9%             |
|               | Sep-17 | 126           | 126 | 0%             | 834       | 882          | 5%             |
|               | Sep-18 | 122           | 126 | 3%             | 852       | 882          | 3%             |
| Bidford       | Sep-16 | 68            | 90  | 24%            | 552       | 658          | 16%            |
|               | Sep-17 | 79            | 90  | 12%            | 577       | 658          | 12%            |

|                  |        |      |      |     |      |      |     |
|------------------|--------|------|------|-----|------|------|-----|
|                  | Sep-18 | 69   | 90   | 23% | 585  | 658  | 11% |
| Henley           | Sep-16 | 110  | 124  | 11% | 831  | 873  | 5%  |
|                  | Sep-17 | 105  | 124  | 15% | 817  | 873  | 6%  |
|                  | Sep-18 | 95   | 124  | 23% | 804  | 873  | 8%  |
| Kineton          | Sep-16 | 189  | 218  | 13% | 1257 | 1460 | 14% |
|                  | Sep-17 | 175  | 218  | 20% | 1295 | 1460 | 11% |
|                  | Sep-18 | 168  | 218  | 23% | 1343 | 1460 | 8%  |
| Shipston         | Sep-16 | 140  | 145  | 3%  | 939  | 1015 | 7%  |
|                  | Sep-17 | 136  | 145  | 6%  | 991  | 1015 | 2%  |
|                  | Sep-18 | 142  | 145  | 2%  | 1037 | 1015 | -2% |
| Stratford Rural  | Sep-16 | 98   | 117  | 16% | 766  | 819  | 6%  |
|                  | Sep-17 | 110  | 117  | 6%  | 778  | 819  | 5%  |
|                  | Sep-18 | 88   | 117  | 25% | 766  | 819  | 6%  |
| Stratford Town   | Sep-16 | 306  | 340  | 10% | 2169 | 2380 | 9%  |
|                  | Sep-17 | 310  | 340  | 9%  | 2255 | 2380 | 5%  |
|                  | Sep-18 | 305  | 340  | 10% | 2313 | 2380 | 3%  |
| Studley          | Sep-16 | 79   | 107  | 26% | 686  | 755  | 9%  |
|                  | Sep-17 | 86   | 107  | 20% | 678  | 755  | 10% |
|                  | Sep-18 | 88   | 107  | 18% | 661  | 755  | 12% |
| South Area Total | Sep-16 | 1090 | 1267 | 14% | 8001 | 8842 | 10% |
|                  | Sep-17 | 1127 | 1267 | 11% | 8225 | 8842 | 7%  |
|                  | Sep-18 | 1077 | 1267 | 15% | 8361 | 8842 | 5%  |

- Additional Place Requirements**

As can be seen from the table below, there are no requirements for additional permanent forms of entry in the South of the County at this stage. However, the expected impact of housing will create a need for in-year 'bulge' classes to be opened particularly in Stratford and Shipston. Approximately 7 of these are predicted to be needed over the next few years.

| Planning Area    | Sep 16       |                   | Sep 17       |                   | Sep 18       |                   | Total        |                   |
|------------------|--------------|-------------------|--------------|-------------------|--------------|-------------------|--------------|-------------------|
|                  | Whole New FE | New In-Year Class | Whole New FE | New In-Year Class | Whole New FE | New In-Year Class | Whole New FE | New In-Year Class |
| Alcester         | 0            | 0                 | 0            | 1                 | 0            | 0                 | 0            | 1                 |
| Bidford          | 0            | 1                 | 0            | 0                 | 0            | 0                 | 0            | 1                 |
| Henley           | 0            | 0                 | 0            | 0                 | 0            | 0                 | 0            | 0                 |
| Kineton          | 0            | 0                 | 0            | 0                 | 0            | 0                 | 0            | 0                 |
| Shipston         | 0            | 0                 | 0            | 1                 | 0            | 2                 | 0            | 3                 |
| Stratford Rural  | 0            | 0                 | 0            | 0                 | 0            | 0                 | 0            | 0                 |
| Stratford Town   | 0            | 0                 | 0            | 0                 | 0            | 2                 | 0            | 2                 |
| Studley          | 0            | 0                 | 0            | 0                 | 0            | 0                 | 0            | 0                 |
| South Area Total | 0            | 1                 | 0            | 2                 | 0            | 4                 | 0            | 7                 |

## Secondary Schools

- Pupil Number Forecasts**

The following table sets out the number of pupils predicted to start secondary school in Year 7 over the next few years along with the likely change in overall pupils numbers in each planning area. An assessment of these figures against the Published Admission Number (PAN) and Net Capacity Assessment is provided.

| Planning Area      | Year   | Year 7 | PAN  | Surplus | Total | Cap  | Surplus |
|--------------------|--------|--------|------|---------|-------|------|---------|
| Alcester & Studley | Sep-16 | 500    | 560  | 11%     | 3021  | 3490 | 13%     |
|                    | Sep-17 | 484    | 560  | 14%     | 3171  | 3490 | 9%      |
|                    | Sep-18 | 504    | 560  | 10%     | 3320  | 3490 | 5%      |
|                    | Sep-19 | 536    | 560  | 4%      | 3441  | 3490 | 1%      |
|                    | Sep-20 | 489    | 560  | 13%     | 3414  | 3490 | 2%      |
| Henley             | Sep-16 | 124    | 123  | -1%     | 596   | 615  | 3%      |
|                    | Sep-17 | 125    | 123  | -2%     | 599   | 615  | 3%      |
|                    | Sep-18 | 125    | 123  | -2%     | 620   | 615  | -1%     |
|                    | Sep-19 | 127    | 123  | -3%     | 636   | 615  | -3%     |
|                    | Sep-20 | 128    | 123  | -4%     | 641   | 615  | -4%     |
| Kineton            | Sep-16 | 158    | 150  | -5%     | 879   | 1090 | 19%     |
|                    | Sep-17 | 181    | 150  | -21%    | 970   | 1090 | 11%     |
|                    | Sep-18 | 174    | 150  | -16%    | 1042  | 1090 | 4%      |
|                    | Sep-19 | 205    | 150  | -37%    | 1108  | 1090 | -2%     |
|                    | Sep-20 | 188    | 150  | -25%    | 1150  | 1090 | -6%     |
| Shipston           | Sep-16 | 98     | 90   | -9%     | 495   | 450  | -10%    |
|                    | Sep-17 | 101    | 90   | -12%    | 508   | 450  | -13%    |
|                    | Sep-18 | 119    | 90   | -32%    | 544   | 450  | -21%    |
|                    | Sep-19 | 113    | 90   | -26%    | 558   | 450  | -24%    |
|                    | Sep-20 | 116    | 90   | -29%    | 575   | 450  | -28%    |
| Stratford          | Sep-16 | 439    | 483  | 9%      | 2920  | 2895 | -1%     |
|                    | Sep-17 | 450    | 483  | 7%      | 3058  | 2895 | -6%     |
|                    | Sep-18 | 495    | 483  | -2%     | 3220  | 2895 | -11%    |
|                    | Sep-19 | 506    | 483  | -5%     | 3308  | 2895 | -14%    |
|                    | Sep-20 | 502    | 483  | -4%     | 3363  | 2895 | -16%    |
| South Area Total   | Sep-16 | 1319   | 1406 | 6%      | 7911  | 8540 | 7%      |
|                    | Sep-17 | 1341   | 1406 | 5%      | 8306  | 8540 | 3%      |
|                    | Sep-18 | 1417   | 1406 | -1%     | 8746  | 8540 | -2%     |
|                    | Sep-19 | 1487   | 1406 | -6%     | 9051  | 8540 | -6%     |
|                    | Sep-20 | 1390   | 1108 | -25%    | 9143  | 8540 | -7%     |

- Additional Place Requirements**

Larger primary school cohorts are starting to transfer to a number of South secondary schools and as a result there will be a need to increase capacity from September 2016 onwards. Over the next three years the need for an additional three permanent forms of entry has been identified.

| Planning Area      | Sep 16       |                   | Sep 17       |                   | Sep 18       |                   | Total        |                   |
|--------------------|--------------|-------------------|--------------|-------------------|--------------|-------------------|--------------|-------------------|
|                    | Whole New FE | New In-Year Class | Whole New FE | New In-Year Class | Whole New FE | New In-Year Class | Whole New FE | New In-Year Class |
| Alcester & Studley | 0            | 0                 | 0            | 0                 | 0            | 0                 | 0            | 0                 |
| Henley             | 0            | 0                 | 0            | 0                 | 0            | 0                 | 0            | 0                 |
| Kineton            | 0            | 0                 | 1            | 0                 | 0            | 0                 | 1            | 0                 |
| Shipston           | 1            | 0                 | 0            | 0                 | 0            | 0                 | 1            | 0                 |
| Stratford          | 0            | 0                 | 0            | 0                 | 1            | 0                 | 1            | 0                 |
| South Area Total   | 1            | 0                 | 1            | 0                 | 1            | 0                 | 3            | 0                 |

## Summary

- The annual number of births in South area has dropped in recent years but there is still a need for additional primary places – at least on a temporary basis - in some areas in particular to meet the target of maintaining 4% surplus places as significant numbers of new houses are built.
- At primary school level, the planned new housing developments in the area are predicted to put pressure on existing year groups, particularly in Shipston and Stratford. As a result, schools may need to open additional classes in older year groups as the need arises. Approximately 7 of these classes will be needed over the next three years.
- There is growing pressure on secondary school places in certain parts that will only be exacerbated by the impact of new housing developments. An additional three forms of entry will be required up to September 2018.

### Section 3: Special Educational Needs Provision

This section sets out the likely changes required to achieve the level and type of provision the County is likely to require over the next few years. Information is provided on the type of provision that will be required and the needs it will need to meet.

#### Existing Provision

Warwickshire County Council's most recent needs assessment for SEN provision has highlighted a number of areas where the County is lacking compared to its statistical neighbours - as a result, there has been a reliance on placing pupils at Independent Specialist Provision (ISP), often at high cost. Details of the most recent position are shown in the table below:

| Local Authority        | Mainstream School | Special School | Resourced Provision | ISP |
|------------------------|-------------------|----------------|---------------------|-----|
| Warwickshire           | 48%               | 42%            | 1%                  | 10% |
| Statistical Neighbours | 48%               | 43%            | 6%                  | 4%  |

Were Warwickshire to attempt to match its SEN provision for pupils with Education and Health Care plans against its statistical neighbours there would be a need to increase the level of resourced provision within mainstream school environments in particular. The table below sets out where the shortages would be against the desired position:

| Position                         | Mainstream School | Special School | Resourced Provision | ISP |
|----------------------------------|-------------------|----------------|---------------------|-----|
| Warwickshire (Latest Actual)     | 1293              | 1128           | 14                  | 259 |
| If as per Statistical Neighbours | 1288              | 1145           | 150                 | 111 |
| Current Difference               | 5                 | -17            | -136                | 148 |

The location of specialist provision is an important consideration as special school pupils are primarily transported in from a wide area each day. The table below sets out the average distance from home to school for current pupils at each special school and the distance the current school site is away from its ideal location to best serve its current cohort of pupils.

| DfE  | School                | Avg Distance Home to School (Miles) | Distance from Ideal Location (Miles) |
|------|-----------------------|-------------------------------------|--------------------------------------|
| 7023 | Brooke School         | 2.3                                 | 0.8                                  |
| 7000 | Exhall Grange School  | 7.6                                 | 1.3                                  |
| 7002 | Oak Wood Primary      | 2.2                                 | 1.3                                  |
| 7046 | Oak Wood Secondary    | 2.2                                 | 1.0                                  |
| 7028 | Ridgeway School       | 4.0                                 | 2.5                                  |
| 7001 | River House School    | 17.5                                | 15.9                                 |
| 7030 | Round Oak School      | 3.4                                 | 1.2                                  |
| 7044 | Welcombe Hills School | 6.1                                 | 0.3                                  |
| 7047 | Woodlands School      | 8.0                                 | 6.6                                  |

## Pupil Number Forecasts

As has been set out in other parts of this strategy document, Warwickshire is set to go through a significant amount of demographic change over the next few years due to changes in the birth rate and the impact of new housing. Using a basic assumption that the prevalence of Special Educational Needs will remain fairly static up to September 2018, the number of pupils requiring additional support is expected to grow by around 9% in that time.

On the basis that the County needs to move towards a pattern of provision more in line with its statistical neighbours, this increase would need to be accommodated in the table below. The additional pupils within mainstream schools are captured in the mainstream planning sections of this document; there is an expected increase in pupils attending special schools and resourced or satellite provision and an anticipated reduction in the number of pupils attending an ISP.

| Position                   | Mainstream School | Special School | Resourced Provision | ISP  |
|----------------------------|-------------------|----------------|---------------------|------|
| Warwickshire (2014 Actual) | 1293              | 1128           | 14                  | 259  |
| Warwickshire 2018 Forecast | 1406              | 1250           | 164                 | 121  |
| Additional Pupils Expected | 113               | 122            | 150                 | -138 |

## Current Capacity

Recent growth in pupil numbers at Warwickshire special schools have left all of them at or close to capacity; in order to accommodate more pupils, it is extremely likely that additional accommodation would need to be provided. The table below sets out the number on roll at the County's special schools as at January 2015; there are currently 14 places available in resourced provision.

| DfE  | School                | Primary | Secondary | Post-16 | Total |
|------|-----------------------|---------|-----------|---------|-------|
| 7023 | Brooke School         | 69      | 58        | 32      | 159   |
| 7000 | Exhall Grange School  | 45      | 121       | 24      | 190   |
| 7002 | Oak Wood Primary      | 94      | 0         | 0       | 94    |
| 7046 | Oak Wood Secondary    | 0       | 93        | 34      | 127   |
| 7028 | Ridgeway School       | 88      | 0         | 0       | 88    |
| 7001 | River House School    | 0       | 58        | 0       | 58    |
| 7030 | Round Oak School      | 0       | 107       | 41      | 148   |
| 7044 | Welcombe Hills School | 66      | 66        | 21      | 153   |
| 7047 | Woodlands School      | 86      | 49        | 19      | 154   |
| -    | Total                 | 448     | 552       | 171     | 1171  |

## Categories of Need

The tables above illustrate the need to rebalance provision by reducing the reliance on ISP placements. The table below sets out the types of need that are currently being met by these providers. It is clear that the vast majority are meeting the needs of pupils with Social, Emotional and Mental Health Needs or Autistic Spectrum Disorder.

| Social, Emotional & Mental Health | Autistic Spectrum Disorder | Hearing Impairment | Specific Learning Difficulty | Speech Language & Comms Needs | Moderate Learning Difficulty | Other Difficulty / Disability |
|-----------------------------------|----------------------------|--------------------|------------------------------|-------------------------------|------------------------------|-------------------------------|
| 63%                               | 19%                        | 5%                 | 4%                           | 4%                            | 2%                           | 4%                            |

## Planned Capacity

- In order to address the apparent shortfall in provision for pupils with SEMH, the WCC is commissioning a new special school in Nuneaton opening in September 2015; this school will be built to accommodate 80 pupils.
- Brooke and Welcombe Hills schools have recently been expanded by 30 places and this provision is in the process of being filled.

## Future Requirements

- WCC is supporting a bid to open a new special school for pupils with SEMH in Rugby in September 2016 under the Free Schools programme.
- To meet the needs of many complex learners with Autism Spectrum Disorder and Communication and Interaction needs whilst remaining in their own communities, WCC is looking to commission new specialist provision attached to mainstream schools across all Education Areas.
- There is an urgent need for educational provision for learners in Key Stages 3 & 4 with acute mental health needs either who have been in-patients in psychiatric hospital and / or who are at a high risk of self-harm. These learners cannot be readily absorbed back into mainstream education, but are capable of achieving academic success and positive life outcomes given the right support.

## Funding required to meet identified needs

The table below sets out the estimated level of capital funding required to deliver the additional provision required over the next three years based on the information set out above.

| Date Required | Area    | Phase     | Places Added | Assumed Delivery Route | Estimated Cost |
|---------------|---------|-----------|--------------|------------------------|----------------|
| Sep-16        | Central | Primary   | 420          | New School             | £4,908,540     |
| Sep-16        | Central | Primary   | 210          | Temporary Classes      | £1,050,000     |
| Sep-17        | Central | Primary   | 30           | Temporary Classes      | £150,000       |
| Sep-18        | Central | Primary   | 150          | Temporary Classes      | £750,000       |
| Sep-16        | Central | Secondary | 300          | Expansion              | £4,382,700     |
| Sep-16        | Eastern | Primary   | 210          | Expansion              | £2,454,270     |
| Sep-16        | Eastern | Primary   | 360          | Temporary Classes      | £1,800,000     |
| Sep-17        | Eastern | Primary   | 420          | New School             | £4,908,540     |
| Sep-17        | Eastern | Primary   | 210          | New School             | £2,454,270     |
| Sep-17        | Eastern | Primary   | 30           | Temporary Classes      | £150,000       |
| Sep-18        | Eastern | Primary   | 60           | Temporary Classes      | £300,000       |
| Sep-16        | Eastern | Secondary | 600          | Expansion              | £8,765,400     |



|        |            |                      |      |                   |             |
|--------|------------|----------------------|------|-------------------|-------------|
| Sep-17 | Eastern    | Secondary            | 300  | Expansion         | £4,382,700  |
| Sep-18 | Eastern    | Secondary            | 300  | Expansion         | £4,382,700  |
| Sep-16 | Nun & Beds | Primary              | 105  | Expansion         | £1,227,135  |
| Sep-16 | Nun & Beds | Primary              | 90   | Temporary Classes | £450,000    |
| Sep-17 | Nun & Beds | Primary              | 210  | Expansion         | £2,454,270  |
| Sep-17 | Nun & Beds | Primary              | 90   | Temporary Classes | £450,000    |
| Sep-18 | Nun & Beds | Primary              | 120  | Temporary Classes | £600,000    |
| Sep-17 | Nun & Beds | Secondary            | 150  | Expansion         | £2,191,350  |
| Sep-18 | Nun & Beds | Secondary            | 450  | Expansion         | £6,574,050  |
| Sep-16 | Southern   | Primary              | 30   | Temporary Classes | £350,610    |
| Sep-17 | Southern   | Primary              | 60   | Temporary Classes | £701,220    |
| Sep-18 | Southern   | Primary              | 120  | Temporary Classes | £1,402,440  |
| Sep-16 | Southern   | Secondary            | 150  | Expansion         | £2,191,350  |
| Sep-17 | Southern   | Secondary            | 150  | Expansion         | £2,191,350  |
| Sep-18 | Southern   | Secondary            | 150  | Expansion         | £2,191,350  |
| Sep-16 | Eastern    | SEN (SEMH)           | 80   | New School        | £9,600,000  |
| Sep-16 | Northern   | SEN (SEMH) Secondary | 6    | New provision     | £195,000    |
| Sep-16 | Central    | SEN (ASD) Primary    | 8    | New provision     | £50,000     |
| Sep-16 | Eastern    | SEN (ASD) Primary    | 8    | New provision     | £50,000     |
| Sep-16 | Northern   | SEN (ASD) Primary    | 8    | New provision     | £50,000     |
| Sep-16 | Nun & Beds | SEN (ASD) Primary    | 8    | New provision     | £50,000     |
| Sep-16 | Southern   | SEN (ASD) Primary    | 8    | New provision     | £50,000     |
| Sep-16 | Central    | SEN (ASD) Secondary  | 10   | New provision     | £50,000     |
| Sep-16 | Eastern    | SEN (ASD) Secondary  | 10   | New provision     | £50,000     |
| Sep-16 | Northern   | SEN (ASD) Secondary  | 10   | New provision     | £50,000     |
| Sep-16 | Nun & Beds | SEN (ASD) Secondary  | 10   | New provision     | £50,000     |
| Sep-16 | Southern   | SEN (ASD) Secondary  | 10   | New provision     | £50,000     |
| Total  |            |                      | 5651 |                   | £74,109,245 |

This data is summarised in the following table; it is anticipated that the funding required will come from a combination of capital grant allocations from the Education Funding Agency and developer contributions.

| Phase     | Sep-16      | Sep-17      | Sep-18      | Total       |
|-----------|-------------|-------------|-------------|-------------|
| Primary   | £12,240,555 | £11,268,300 | £3,052,440  | £26,561,295 |
| Secondary | £15,339,450 | £8,765,400  | £13,148,100 | £37,252,950 |
| SEN       | £10,295,000 | £0          | £0          | £10,295,000 |
| Total     | £37,875,005 | £20,033,700 | £16,200,540 | £74,109,245 |